

*A publication of  
The Land Institute  
Number 64  
Summer 1999*

---

# *The Land Report*



*Agrarianism:  
The second of three  
special issues*

# Contents

The Whole Horse by *Wendell Berry* . . . . . 3

Net Surfing 2:00 A.M. by *Mary Mackey*. . . . . 9

Community Supported Agriculture: Bringing the  
Dinner Table to the Farm by *Dan Imhoff* . . . . . 10

In Celebration of a New Day by *David Kline* . . . . . 12

Ecological Determinism vs. the Jeffersonian Ideal  
by *Wes Jackson* . . . . . 17

To David and Ida Eisenhower  
by *Dwight D. Eisenhower* . . . . . 20

Uncle Peewee by *Donald McCaig* . . . . . 21

A Post Script to the Hog Wars by *Maurice Telleen*. . 24

At The Land . . . . . 28

About the Authors by *Wes Jackson*. . . . . 30

About the Photographers by *Terry Evans* . . . . . 31

Gifts in Honor of/Gifts in Memory of . . . . . 32

Donor Acknowledgements . . . . . 32

Cover Photograph:  
Solomon D. Butcher.  
Nebraska State  
Historical Society

Back Cover  
Photograph: Wright  
Morris, *Straightback  
Chair; Home Place,  
Near Norfolk,  
Nebraska, 1947*

Above: Scott Jost,  
*Wahaub Prairie, The  
Land Institute, 1996*



## Our Mission Statement

When people, land, and community are as one, all three members prosper; when they relate not as members but as competing interests, all three are exploited. By consulting nature as the source and measure of that membership, The Land Institute seeks to develop an agriculture that will save soil from being lost or poisoned while promoting a community life at once prosperous and enduring.

The Land Report is published three times a year.

Editor: Wes Jackson  
Associate Editor and Production:  
Elizabeth Granberg  
Graphic Design: Scott Jost  
Circulation Manager: Laura  
Underwood  
Art Editor: Terry Evans  
Printed by Arrow Printing Company

STAFF: Ron Armstrong, Marty  
Bender, Elizabeth Granberg,  
Stephanie Hutchinson, Wes Jackson,  
Dennis Lambert, Patty Melander,  
Joan Olsen, Bob Pinkall, Steve  
Renich, Alice Sutton, Laura  
Underwood, David Van Tassel, Ken  
Warren, Bev Worster.

BOARD OF DIRECTORS: Sally  
Cole, Terry Evans, Pete Ferrell,  
Charles Francis, Wes Jackson,  
Rhonda Janke, Paul Johnson, Eulah  
Laucks, Conn Nugent, Victoria  
Ranney, John Simpson, Donald  
Worster, Angus Wright



2440 E. Water Well Rd.  
Salina, KS 67401  
(785) 823-5376, phone  
(785) 823-8728, fax  
theland@midkan.com

ISSN 1093-1171

# The Whole Horse

Wendell Berry

*This modern mind sees only half of the horse—that half which may become a dynamo, or an automobile, or any other horsepower machine. If this mind had much respect for the full-dimensioned, grass-eating horse, it would never have invented the engine which represents only half of him. The religious mind, on the other hand, has this respect; it wants the whole horse, and it will be satisfied with nothing less.*

*I should say a religious mind that requires more than a half-religion.*

—Allen Tate, “Remarks on the Southern Religion,” in *I’ll Take My Stand*

One of the primary results—and one of the primary needs—of industrialism is the separation of people and places and products from their histories. To the extent that we participate in the industrial economy, we do not know the histories of our families or of our habitats or of our meals. This is an economy, and in fact a culture, of the one-night stand. “I had a good time,” says the industrial lover, “but don’t ask me my last name.” Just so, the industrial eater says to the svelte industrial hog, “We’ll be together at breakfast. I don’t want to see you before then, and I won’t care to remember you afterwards.”

In this condition, we have many commodities, but little satisfaction, little sense of the sufficiency of anything. The scarcity of satisfaction makes of our many commodities, in fact, an infinite series of commodities, the new commodities invariably promising greater satisfaction than the older ones. And so we can say that the industrial economy’s most-marketed commodity is satisfaction, and that this commodity, which is repeatedly promised, bought, and paid for, is never delivered.

This persistent want of satisfaction is directly and complexly related to the dissociation of ourselves and all our goods from our and their histories. If things do not last, are not made to last, they can have no histories, and we who use these things can have no memories. One of the procedures of the industrial economy is to reduce the longevity of materials. For example, wood, which well-made into buildings and furniture and well cared for can last hundreds of years, is now routinely manufactured into products that last twenty-five years. We do not cherish the memory of shoddy and transitory objects, and so

we do not remember them. That is to say that we do not invest in them the lasting respect and admiration that make for satisfaction.

The problem of our dissatisfaction with all the things that we use is not correctable within the terms of the economy that produces those things. At present, it is virtually impossible for us to know the economic history or the ecological cost of the products we buy; the origins of the products are typically too distant and too scattered and the processes of trade, manufacture, transportation, and marketing too complicated. There are, moreover, too many good reasons for the industrial suppliers of these products not to want their histories to be known.

Where there is no reliable accounting and therefore no competent knowledge of the economic and ecological effects of our lives, we cannot live lives that are economically and ecologically responsible. This is the problem that has frustrated, and to a considerable extent undermined, the American conservation effort from the beginning. It is ultimately futile to plead and protest and lobby in favor of public ecological responsibility while, in virtually every act of our private lives, we endorse and support an economic system that is by intention, and perhaps by necessity, ecologically irresponsible.

If the industrial economy is not correctable within or by its own terms, then obviously what is required for correction is a countervailing economic idea. And the most significant weakness of the conservation movement is its failure to produce or espouse an economic idea capable of correcting the economic idea of the industrialists. Somewhere near the heart of the conservation effort as we have known it is the romantic assumption that, if we have become alienated from nature, we can become unalienated by making nature the subject of contemplation or art, ignoring the fact that we live necessarily in and from nature—ignoring, in other words, all the economic issues that are involved. Walt Whitman could say, “I think I could turn and live with animals,” as if he did not know that, in fact, we *do* live with animals, and that the terms of our relation to them are inescapably established by our economic use of their and our world. So long as we live, we are going to be living with skylarks, nightingales, daffodils, waterfowl, streams, forests, mountains, and all the other creatures that romantic poets and artists have yearned toward. And by the way we live we will determine whether or not those creatures will live.

That this nature-romanticism of the nineteenth century ignores economic facts and relationships has not

---

*Originally published in a shortened version, Americus Journal, Winter 1999*



prevented it from setting the agenda for modern conservation groups. This agenda has rarely included the economics of land use, without which the conservation effort becomes almost inevitably long on sentiment and short on practicality. The giveaway is that when conservationists try to be practical they are likely to defend the “sustainable use of natural resources” with the argument that this will make the industrial economy sustainable. A further giveaway is that the longer the industrial economy lasts in its present form, the further it will demonstrate its ultimate impossibility: every human in the world cannot, now or ever, own the whole catalogue of shoddy, high-energy industrial products which cannot be sustainably made or used. Moreover, the longer the industrial economy lasts, the more it will eat away the possibility of a better economy.

The conservation effort has at least brought under suspicion the general relativism of our age. Anybody who has studied with care the issues of conservation knows that our acts are being measured by a real and unyielding standard that was invented by no human. Our acts that are not in harmony with nature are inevitably and sometimes irremediably destructive. The

standard exists. But having no opposing economic idea, conservationists have had great difficulty in applying the standard.

What, then, is the countervailing idea by which we might correct the industrial idea? We will not have to look hard to find it, for there is only one, and that is agrarianism. Our major difficulty (and danger) will be in attempting to deal with agrarianism as “an idea”—agrarianism is primarily a practice, a set of attitudes, a loyalty, and a passion; it is an idea only secondarily and at a remove. I am well aware of the danger in defining things, but if I am going to talk about agrarianism, I am going to have to define it. The definition that follows is derived both from agrarian writers, ancient and modern, and from the unliterary and sometimes illiterate agrarians who have been my teachers.

The fundamental difference between industrialism and agrarianism is this: Whereas industrialism is a way of thought based on monetary capital and technology, agrarianism is a way of thought based on land.

An agrarian economy rises up from the fields, woods, and streams—from the complex of soils, slopes, weathers, connections, influences, and exchanges that



Above: Paula Chamlee, *from the series High Plains Farm, Adrian, Texas, 1994*

Left: Solomon D. Butcher, *Charles Blakeman, Custer County, Nebraska, c. 1890-91*. Nebraska State Historical Society.

we mean when we speak, for example, of the local community or the local watershed. The agrarian mind is therefore not regional or national, let alone global, but local. It must know on intimate terms the local plants and animals and local soils; it must know local possibilities and impossibilities, opportunities and hazards. It depends and insists on knowing very particular local histories and biographies.

Because a mind so placed meets again and again the necessity for work to be good, the agrarian mind is less interested in abstract quantities than in particular qualities. It feels threatened and sickened when it hears people and creatures and places spoken of as labor, management, capital, and raw material. It is not at all impressed by the industrial legendry of gross national products, or of the numbers sold and dollars earned by gigantic corporations. It is interested—and forever fascinated—by questions leading toward the accomplishment of good work: What is the best location for a particular building or fence? What is the best way to plow *this* field? What is the best course for a skid road in *this* woodland? Should *this* tree be cut or spared? What are the best breeds and types of livestock for *this* farm?—questions which cannot be answered in the abstract, and which yearn not toward quantity but toward elegance. Agrarianism can never become abstract because it has to be practiced in order to exist.

An agrarian economy is always a subsistence economy before it is a market economy. The center of an agrarian farm is the household. It is the subsistence part of the agrarian economy that assures its stability and its survival. A subsistence economy necessarily is highly diversified, and it characteristically has involved hunting and gathering as well as farming and gardening. These activities bind people to their local landscape by close, complex interests and economic ties. The industrial economy alienates people from the native landscape precisely by breaking these direct practical ties and introducing distant dependencies.

Agrarian people of the present, knowing that the land must be well cared for if anything is to last, understand the need for a settled connection, not just between farmers and their farms, but between urban people and their surrounding and tributary landscapes. Because the knowledge and know-how of good caretaking must be handed down to children, agrarians recognize the necessity of preserving the coherence of families and communities.

The stability, coherence, and longevity of human occupation require that the land should be divided among many owners and users. The central figure of agrarian thought has invariably been the small owner or small holder who maintains a significant measure of economic self-determination on a small acreage. The scale and independence of such holdings imply two

things that agrarians see as desirable: intimate care in the use of the land, and political democracy resting upon the indispensable foundation of economic democracy.

A major characteristic of the agrarian mind is a longing for independence—that is, for an appropriate degree of personal and local self-sufficiency. Agrarians wish to earn and deserve what they have. They do not wish to live by piracy, beggary, charity, or luck.

In the written record of agrarianism, there is a continually recurring affirmation of nature as the final judge, law-giver, and pattern-maker of and for the human use of the earth. We can trace the lineage of this thought in the West through the writings of Virgil, Spenser, Shakespeare, Pope, Thomas Jefferson, and on into the work of the twentieth century agriculturists and scientists, J. Russell Smith, Liberty Hyde Bailey, Albert Howard, Wes Jackson, John Todd, and others. The idea is variously stated: we should not work until we have looked and seen where we are; we should honor Nature not only as our mother or grandmother, but as our teacher and judge; we should “let the forest judge;” we should “consult the Genius of the Place;” we should make the farming fit the farm; we should carry over into the cultivated field the diversity and coherence of the native forest or prairie. And this way of thinking is surely allied to that of the medieval scholars and architects who saw the building of a cathedral as a symbol or analogue of the creation of the world. John Haines has written that “the eternal task of the artist and the poet, the historian and the scholar ... is to find the means to reconcile what are two separate and yet inseparable histories, Nature and Culture. To the extent that we can do this, the ‘world’ makes sense to us and can be lived in.” I would add only that this applies also to the farmer, the forester, the scientist, and others.

The agrarian mind begins with the love of fields and ramifies in good farming, good cooking, good eating, and gratitude to God. Exactly analogous to the agrarian mind is the sylvan mind that begins with the love of forests and ramifies in good forestry, good wood-working, good carpentry, etc., and gratitude to God. These two kinds of mind readily intersect and communicate; neither ever intersects or communicates with the industrial-economic mind. The industrial-economic mind begins with ingratitude, and ramifies in the destruction of farms and forests. The “lowly” and “menial” arts of farm and forest are mostly taken for granted or ignored by the culture of the “fine arts” and by “spiritual” religions; they are taken for granted or ignored or held in contempt by the powers of the industrial economy. But in fact they are inescapably the foundation of human life and culture, and their adepts are capable of as deep satisfactions and as high attainments as anybody else.



Having, so to speak, laid industrialism and agrarianism side by side, implying a preference for the latter, I will be confronted by two questions that I had better go ahead and answer.

The first is whether or not agrarianism is simply a “phase” that we humans had to go through and then leave behind in order to get onto the track of technological progress toward even greater happiness. The answer is that although industrialism has certainly conquered agrarianism, and has very nearly destroyed it altogether, it is also true that in every one of its uses of the natural world industrialism is in the process of catastrophic failure. Industry is now desperately shifting—by means of genetic engineering, global colonialism, and other contrivances—to prolong its control of our farms and forests, but the failure nonetheless continues. It is not possible to argue sanely in favor of soil erosion, water

pollution, genetic impoverishment, and the destruction of rural communities and local economies. Industrialism, unchecked by the affections and concerns of agrarianism, becomes monstrous. And this is because of a weakness identified by the Twelve Southerners of *I’ll Take My Stand* in their “Statement of Principles”: under the rule of industrialism “the remedies proposed ... are always homeopathic.” Industrialism always proposes to correct its errors and excesses by more industrialization.

The second question is whether or not by espousing the revival of agrarianism we will commit the famous sin of “turning back the clock.” The answer to that, for present-day North Americans, is fairly simple. The overriding impulse of agrarianism is toward the local adaptation of economies and cultures. Agrarian people wish to fit the farming to the farm and the forestry to



Above: Paula Chamlee,  
*From the series High Plains  
Farm, Adrian, Texas, 1994.*

Left: Solomon Butcher,  
*Henry Luther Home, Ortello  
Valley, Near Dale, Custer  
County, Nebraska, 1887.*  
Nebraska State Historical  
Society.

the forest. At times and in places we latter-day Americans may have come close to accomplishing this goal, but we never yet have developed stable, sustainable, locally adapted land-based economies. The good rural enterprises and communities that we will find in our past have been almost constantly under threat from the colonialism, first foreign and then domestic, which has so far dominated our history, and which has been institutionalized for a long time in the industrial economy. The possibility of an authentically settled country still lies ahead of us.

If we wish to look ahead, we will see not only in the United States but in the world two economic programs that conform pretty exactly to the aims of industrialism and agrarianism as I have described them.

The first is the effort to globalize the industrial economy, not merely by the expansionist programs of supra-national corporations within themselves, but also by means of government-sponsored international trade agreements, the most prominent of which is the new General Agreement on Tariffs and Trade. The new GATT is a product of the industrial ambition to use, sell, or destroy every acre and every creature of the world.

The old GATT contained 78 pages. The new agreement, with its "annexes," contains 26,000 pages; it is said to weigh 385 pounds. No individual who will administer it or be ruled by it will ever read it all. Obviously, it can be administered only by a big bureaucracy, which will not increase the size of any national government only because it will operate independently of any national government.

The second program, counter to the first, is comprised of many small efforts to preserve or improve or establish local economies. These efforts on the part of non-industrial or agrarian conservatives, local patriots, are taking place in countries both affluent and poor all over the world.

Whereas the corporate sponsors of GATT, in order to promote their ambitions, have required only the hazy glamour of such phrases as "the global economy," "the global context," and "globalization"—and thus apparently have vacuum-packed the mind of every politician and political underling in the country—the local economists use a much more diverse and particularizing vocabulary that you can actually think with: "community," "ecosystem," "watershed," "place," "homeland," "family," and "household."

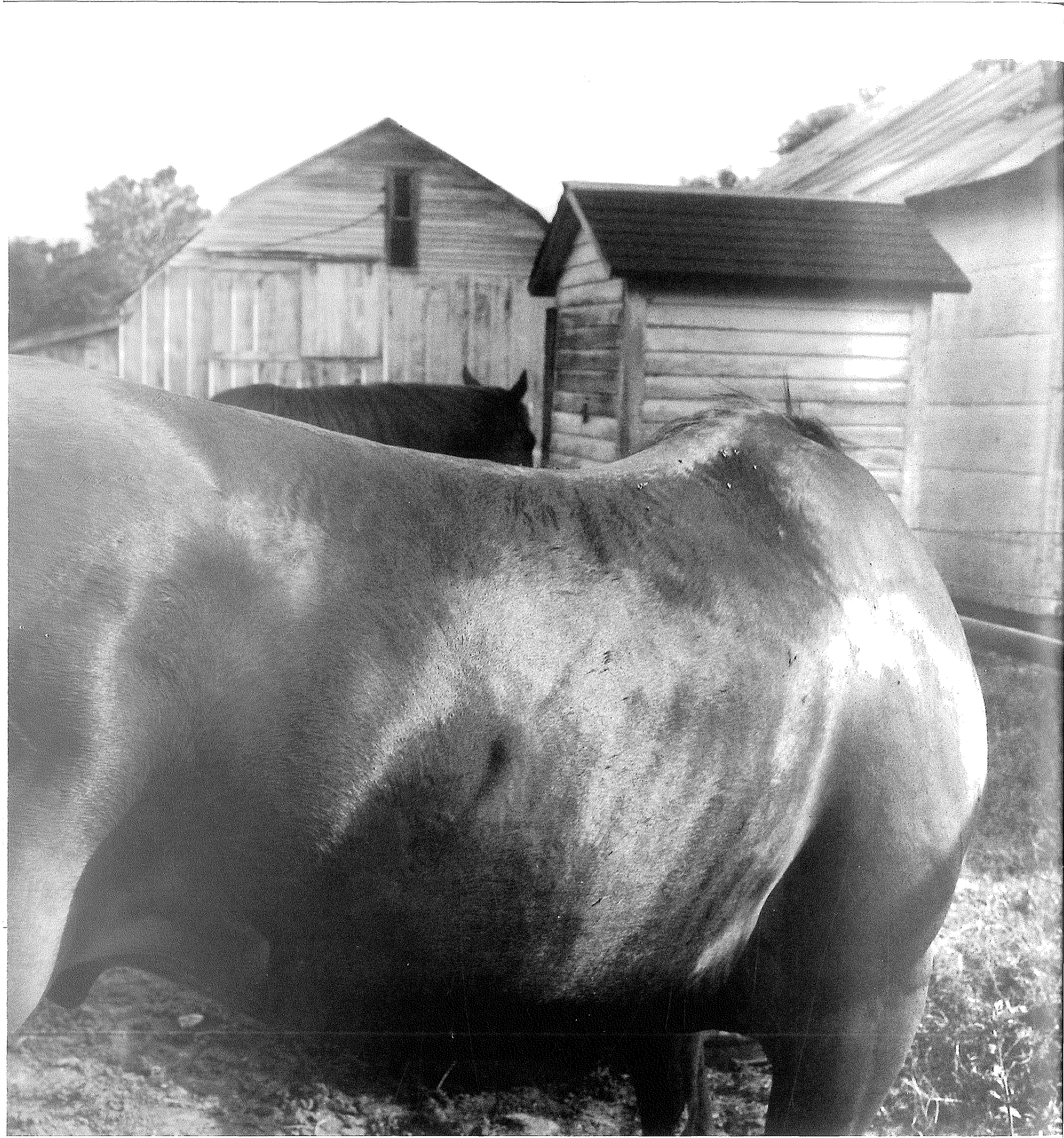
And whereas the global economists advocate a world-government-by-economic-bureaucracy, which would destroy local adaptation everywhere by ignoring the uniqueness of every place, the local economists found their work upon respect for such uniqueness. Places differ from one another, the local economists say, therefore we must behave with unique consideration in

each one; the ability to tender an appropriate practical regard and respect to each place in its difference is a kind of freedom; the inability to do so is a kind of tyranny. The global economists are the great centralizers of our time. The local economists, who have so far attracted the support of no prominent politician, are the true decentralizers and downsizers, for they seek an appropriate degree of self-determination and independence for localities. They seem to be moving toward a radical and necessary revision of our idea of a city. They are learning to see the city, not just as a built and paved municipality set apart by "city limits" to live by trade and transportation from the world at large, but rather as a part of a community which includes also the city's rural neighbors, its surrounding landscape and its watershed, on which it might depend for at least some of its necessities, and for the health of which it might exercise a competent concern and responsibility.

At this point, I want to say pointblank what I hope is already clear: though agrarianism proposes that everybody has agrarian responsibilities, it does not propose that everybody should be a farmer or that we do not need cities. Furthermore, any thinkable human economy would have to grant to manufacturing an appropriate and honorable place. Agrarians would insist only that any manufacturing enterprise should be formed and scaled to fit the local landscape, the local ecosystem, and the local community, and that it should be locally owned and employ local people. They would insist, in other words, that the shop or factory owner should not be an outsider, but rather a sharer in the fate of the place and its community. The deciders should live with the results of their decisions.

Between these two programs—the industrial and the agrarian, the global and the local—the most critical difference is that of knowledge. The global economy institutionalizes a global ignorance, in which producers and consumers cannot know or care about one another, and in which the histories of all products will be lost. In such a circumstance, the degradation of products and places, producers and consumers is inevitable.

But in a sound local economy, in which producers and consumers are neighbors, nature will become the known standard of work and production. Consumers who understand their economy will not tolerate the destruction of the local soil or ecosystem or watershed as a cost of production. Only a healthy local economy can keep nature and work together in the consciousness of the community. Only such a community can restore history to economics.



*Terry Evans, Arlene  
Bailey's Horse, Matfield  
Green, Kansas, 1997*

# Net Surfing 2:00 A.M.

Mary Mackey

in the great invisible electronic  
library of the world  
the real thing is nothing  
image is all

bleary with coffee  
and grief for a friend  
who died the day before  
I find myself staring at the screen and wondering  
how many pixels it takes  
to make a wood duck  
or an island of black frigate birds  
mating in the mangroves  
their globed orange throat pouches  
pulsing with birdly lust

in front of me  
in a space no larger than two hands spanned  
I can watch flocks of pink flamingos  
migrating  
stick-legged, silly-beaked  
bits of egg-laying confetti  
left over from the big party  
of creation

there's a comfort to the sight  
of so many birds. Here at least,  
I think,  
life out-runs extinction

once in Cambridge  
in the Peabody Museum  
I came across the last passenger pigeon  
ever sighted in America  
neatly stuffed  
with combed feathers and agate eyes  
sitting on a fake limb in a glass case  
under a card which informed me  
that it had been shot  
by the Harvard expedition of 1893

once I read  
that Audubon himself  
killed to sketch

now  
in front of me  
electronic snow geese  
by the thousands  
swirl over the marshes  
of the Central Valley  
now in one night  
I can see  
more cranes and herons  
than ever fled south  
before the snows of winter

I touch the screen with my fingertips  
taste it with my tongue  
how cold this tiny window is  
that drugs me with perpetual flight  
on tapes and chips and CD-ROM  
the programmers have recreated paradise  
and yet ...

I pause, consider, and decide:  
I strike a key  
I click the mouse  
I let myself forget  
the crossed out phone number  
the returned mail  
the name he no longer answers to  
the silent woods  
the long darkness  
the quiet  
empty  
sky.

# Community Supported Agriculture: Bringing the Dinner Table to the Farm

Dan Imhoff

Until our move to a rural valley, my family's primary provider of fruits and vegetables for the past four years has been a Northern California farmer named Kathy Barsotti. Every Tuesday a half-bushel box arrived on our doorstep, fresh from the fields and orchards at Capay Fruits and Vegetables, 80 miles northeast of San Francisco. While my wife or I sorted through the delivery, the other read aloud from the accompanying one-page newsletter, detailing the contents, relating weekly weather and farm progress, and offering some intriguing recipe ideas. One week in early April, Barsotti wrote:

The tomatoes that we transplanted last week look very nice, thank goodness! It was a real blow to lose our first planting. We have fruit on the Asian pears, the figs, the apricots, and the peaches. As soon as we get a chance, we need to begin thinning so we get a decent size on the ripe ones. All of our thinning is done by hand. The mandarins are putting out their first flush of leaves, and the flowers are just starting to bloom. Soon we will be living in the heavenly fragrance of orange blossoms.

Twenty dollars per week (plus a five dollar delivery fee split among neighbors) supplied us and our two small children with most of the produce we needed, including leftovers for a weekly soup. Our son's first solid food came from these boxes, steamed vegetables and fresh fruits mashed with a small hand-mill. In winter, leafy greens, root crops and citrus predominated. By mid-summer, the boxes overflowed. We relinquished our choice in the arrangement, learning instead to make the most of what Kathy had managed to produce or procure from neighboring farmers during any given week. In doing so we were participating in Community Supported Agriculture, a movement which over the past decade has rescued many small diverse farms across the country struggling against rising land values, international competition, government price supports for agribusiness and increasing production costs.

According to *Farms of Tomorrow Revisited* (Biodynamic Farm and Gardening Association, 1997) co-author Stephen McFadden, there were upwards of 1,000 U.S. farms in 1997 which, like Capay Fruits and Vegetables, offered a direct relationship with a body of members. Individually each of these farms is referred to

as a CSA. Although all CSAs have common goals, each is unique. Some are best described as "mutual farms," where members enter a partnership with the farmer, investing \$450 - \$900 for "shares" at the beginning of the year in return for edible dividends throughout the growing season. Others are monthly subscription arrangements with an emphasis on customer service, like pre-washed salad mix, fresh-cut flowers and home delivery. CSAs range from five-share gardens cultivated solely by members, to large farms serving nearly 1,000 share holders. While the majority relies on designated drop-off sites where customers retrieve their weekly bounty, some insist that pick-your-own programs are what separate pure Community Supported Agriculture farms from mere subscription arrangements and other less ideologically-driven interpretations. In terms of a national average, a weekly CSA share provides enough for three people and costs between \$12 and \$25.

"The CSA is a valuable model for many reasons," explains Judith Redmond, executive director of the Community Alliance with Family Farmers (CAFF) in Davis, California, and co-founder of Full Belly Farms, which has been operating a CSA in the Capay Valley since 1994. "Because most members pay a yearly share up front before the growing season begins, it significantly helps out with our cash flow. And because our members expect to receive what's done well on the farm on any given week, we have a guaranteed outlet for in-season produce and heavy yielders."

For my wife and I, CSA membership was a lifestyle choice, not much different than bicycling to work, using a cotton diaper service or composting in a backyard worm box. The challenge of broadening our culinary repertoires by using only what was in season, combined with the fresh organic ingredients, elevated our culinary skills. We became creative with kale and kohlrabi, looked forward to weeks of leeks, learned to live without tomatoes and green beans (in winter and spring), and evolved into competent soup makers.

I visited Kathy Barsotti's farm on a sizzling hot May afternoon. The Capay Valley has a broad flat belly that meanders gracefully and is surrounded on both sides by hills with grassy meadows and oak groves. There was so much pollen in the air my head was pounding audibly, though the farm was about as pastoral a scene as one could imagine. A small, fit woman with a welcoming smile, Barsotti was watering tomato

## It takes about

*thirty years of active work, experiment, observation, and study  
to make a passable farmer.*

—Charles Allen Smart

starts in the greenhouse when I arrived. A safari helmet shielded her face from the sun. Her three full-time farmhands, who I'd been reading about for some time, were thinning peaches.

Barsotti owned 25 acres herself and farmed a total of 90. The CSA resembled an extensive orchard and garden, and was producing 20 different vegetables. Each row hosted one or more crops: ambrosia melons and mickey lee watermelons; green zebra and Thessaloniki tomatoes; romaine and red leaf lettuce. "This is more like quilting than farming," said Barsotti. "This is what I wanted when I started farming 20 years ago, and running a CSA now allows me to earn my living off of 90 acres."

The Capay Valley has in fact been a haven for small diverse organic operations such as Barsotti's, and there were four other CSAs in the area, all delivering boxes to Bay Area residents in addition to selling wholesale, in farmers' markets and to restaurants. While these local farmers remained competitive on some levels, there was also a great deal of cooperation among them. "Having two or three CSAs in a region gives a real boost to a community's economy," explained Barsotti, who had been bartering and buying apricots, oranges, salad greens and a variety of other items from neighboring farmers to ensure each week's delivery was as fair to her members as possible.

Fellow valley farmer Judith Redmond concurred. Twice in the last four years, Full Belly has shared its waiting list with other CSAs needing a body of customers to grow their businesses. (A great majority of the CSA founders that I've talked to have had waiting lists throughout the 1990s.) I contrasted for a moment that gesture with the proprietary nature of agribusiness—in particular the great rush to patent nearly all the biological wealth on the planet, not necessarily to help feed and clothe the world, but to corner the market on it—and I caught a glimmer of the spirit that has cloaked the organic farming movement since its practitioners idealistically headed for the boonies in the 1970s to take charge of their own food supply.

Ironically, on my way out of the Capay Valley, I found few opportunities to eat or buy the outstanding food being grown in this productive region—not in the corner grocery store or at the local restaurant. In most parts of the country, farming remains an export-oriented system. Crops are primarily exported for distribution,

while food is imported for consumption and for centralized processing. Over the past decade, I've read (and even cited myself) the 1983 statistic that the average food item in the United States travels 1,300 miles before it reaches the dinner table.<sup>1</sup> (Taking into account the North American Free Trade Agreement, and the increasing reliance on Chilean imports, that estimate could indeed be extremely conservative today.) CSAs have drastically diminished that distance between the farm and the dinner table. Most memberships are located within 100 miles or less of a farm. By limiting transportation and perishability—two factors which dictate what crops can be sown for national or international markets—CSAs offer better tasting heirloom varieties that stay fresher longer and don't have to be fumigated, irradiated, refrigerated or shipped great distances.

Distinctions between locally-produced and national or international farming systems were highlighted in 1997 when two Capay Valley farmers experienced run-ins with local bureaucracies. Both farms, delivering in two different communities, were employing the common practice of using a member's porch as a weekly drop-off site. Grievous neighbors, angry with the tenants responsible for creating the drop-off sites, filed complaints about both CSAs. In one instance, a city health department objected to the use of a porch as a delivery site for produce, not citing any specific code violations, but insinuating that there might be sanitation concerns with issuing uninspected produce. In the other, a city business zoning violation was cited, inferring that tax or licenses may be applicable to this type of unmitigated commerce. Both cases left CSA owners feeling vulnerable, because the concept—even though it involves freshly picked, carefully washed and appropriately packed produce—could soon be scrutinized by health and zoning bureaucracies.

"The lesson we learned," said one of the farmers, "was that we had to take a pro-active and friendly approach to any community we were going into. That

<sup>1</sup> Amory and Hunter Lovins and Marty Bender, "Energy and Agriculture," from *Meeting the Expectations of the Land: Essays in Sustainable Agriculture and Stewardship*, edited by Wes Jackson, Wendell Berry, Bruce Colman, North Point Press, San Francisco, 1983.

means not blocking traffic with our delivery trucks—even though couriers do it regularly—and giving out free boxes to neighbors to educate them about Community Supported Agriculture.”

While a middleman-free, direct delivery system has forged new links between growers and consumers, there are still CSA farmers who feel that Community Supported Agriculture requires far more involvement than just monetary participation from its members. Many successful CSAs have survived primarily because they have recruited a “core group,” with the sole purpose of “letting the farmer farm.” These core group members actively and regularly assist with a variety of the organizational tasks necessary to keep the trains of these detailed operations running on time: bookkeeping, delivery, harvesting, packaging and communications. While the core group strategy seems to be more fully integrated on east coast and mid-west CSA farms than those in the western region, it points to the fact that

there are a myriad other tasks besides growing and harvesting that go into the management of a CSA. Juggling tedious accounting systems, newsletter writing, weekly planting schedules, all help to double or triple the workload of the already maxed out market gardener. The core group is one way to delegate some of the work. Apprentices are common on most farms as well. Other farmers develop computerized bookkeeping systems, take out toll-free numbers, and cultivate large memberships to keep their operations manageable and profitable.

Many farmers believe the roots of Community Supported Agriculture lie deeper and spread farther still. Social and economic missions sometimes are as important as the food production. On many farms, members shoulder a proportion of the labor. One example is the Genesee Valley CSA outside Rochester, New York, which not only has an active core group of 21 members, but also requires a commitment among its 200 share-

## In Celebration of a New Day

David Kline

**This morning it was 60 degrees with patchy fog when I walked up over the east hill to get the cows. Even though the moon is waning toward its last quarter, its light, filtered by the fog, still illuminated the cowpath enough that I did not need the flashlight.**

**To the right of the crescent moon was Orion on his back, and shimmering Sirius hung low in the southeast. When I reached the top of the hill I stopped to listen. The quietude of the early morning was so complete that the katydids' grexing from the woods a quarter of a mile away to my left sounded only an arm's length away. So did the screech owl's quavering call from the farmstead to the right.**

**I waited. Then I heard the first one — a farmer calling his cows. A low “kummsaaaaa” (the sa as in salve) from the next farm. Melvin's sort of a low-key guy and doesn't use the wild and free cry**

**most of his neighbors do. I thought it was time for a wake-up call so I cupped my hands to my mouth, filled my lungs with the night-chilled air, and let lose with a high-pitched “Whoooooo, whoooooo.” The echoes hadn't died out before two other neighbors joined the chorus with their finest calls.**

**Dennis has a wonderful repertoire; at least half a dozen different musical yodels. A joy to behold. Of course, he is also one of the best singers in church.**

**From Bert I learned a beautiful split “who/ooo.” It is a melodious call passed down through his family; a call that was fine-tuned in the Alpine meadows of Switzerland. But I hadn't heard from him yet. Since he is an early riser he likely had the cows in the stable already.**

**I decided to check Bert out. Tempt him. (Usually when a farmer oversleeps he's very discreet about it and may not**

**even call his cows; he simply fetches them.) I sent my finest version of the split “WHOOOO/ooooo” reverberating up and down the valley. Immediately Bert answered with a fine tenor, “WHOOOOOOOO/ooooooo o.” Aha, he did get up a bit late. Five instead of four-thirty. From a mile west Enos answered.**

**Soon I heard soft lowing from the fog. Glow complaining about her arthritic hip. Then came Patsy and Gertie and Linda and Nell and the rest of the herd walking single file down the path toward the barn.**

**Once more I inhaled the sweet chill air rich with the ripeness of summer and called “WHOOO/ooooooo.” Not for the cows this time, but a call in celebration of a new day.**

---

Anyone who isn't stupid enough  
to spend all his time trying to farm,  
or to make money, or books,  
or something,

*knows*

---

*that a neighbor's orchard is a perfect place for making love.*

—Charles Allen Smart

holders to spend 12 hours per season helping on the farm and four hours assisting with distribution.

This kind of hands-on participation is different from the semi-annual work days and harvest festivals which most CSAs sponsor, events which require a fair amount of organization and supervision by farmers, and which possibly net less productivity than one might think. On a visit to Live Power Farm in Covelo, California, I plowed a field behind a pair of Belgian draught horses with biodynamic farmer Steve Decatur at the reins. I struggled to keep the harrow in a straight line, the rich dark earth unfurling behind me, a flock of blackbirds trailing us, pecking at the newly exposed worms. We worked hard until dusk, the experience seeping into tired muscles. While Decatur no doubt could have done the work in a quarter of the time and much more effectively than I did, it was an experience that changed me, deepening my appreciation for the food on our tables and for the people who make it all possible.

The Food Bank Farm, on the confluence of the Connecticut and Fort Rivers in Hadley, Massachusetts, donates half of its weekly output to needy families, soup kitchens, halfway houses, and other organizations in the area. Not only do members fund these charitable outreach efforts, they still receive culinary dividends that are reputed to be a great bargain. According to one survey, the Food Bank Farm's yearly share of \$375, would cost \$800 if bought piecemeal at Stop-N-Shop, the regional conventional supermarket, and \$1200 at Bread and Circus, an organic foods market.

In 1996 core group members at the Live Power Farm in Northern California tackled head-on one of the most difficult challenges facing CSA founders across the country: land tenure. Without ownership, farmers can spend a great deal of their income paying rent or a mortgage for land that would be worth far more as a supermarket or housing development than a responsibly stewarded CSA. Live Power's core group spearheaded a campaign which raised nearly \$100,000 to purchase the land occupied by biodynamic farmers Stephen and Gloria Decatur. Within a year, Live Power Farm was placed into a conservation easement, requiring that any future land use of the 40-acre property remain agricultural. The Decatur's received the agricultural rights to the farm—not to the real estate development value. This separation between the agricultural and development values gave this hard working farm family equity in the

land they were dedicated to improving. It also set up a procedure whereby the Decatur's could sell their farming title to a trust when they retire, or pass it on to their kids if they agreed to farm it.

"The CSA model is attracting new sources of capital to the issues of small diverse agriculture," explained Chick Matthei, of Equity Trust Incorporated, a Voluntown, Connecticut-based organization who worked on the Live Power conservation arrangement and continues to create new legal and technical tools to preserve small farms in public trusts. Matthei's "Gaining Ground" seminars, conducted around the country, are aimed at attracting diverse players to the issue of vanishing urban crop land, farm inheritance, and conservation. "Because of the CSA model, there is an openness now in public circles that small farms must be protected. While its overall percentage of the current food system remains small, Community Supported Agriculture is having an effect far beyond its size."

It is easy to wax overly optimistic and idealistic about the success of the CSA model, and some wild claims have appeared citing revolutionary overhauls of the small farm scene. CSAs continue to cater mostly to well-to-do city dwellers rather than rural residents—the same people who can afford to buy microbrews can now purchase hand crafted fruits and vegetables and feel good about them. Viewed even more skeptically, these farms-in-a-box schemes could be seen as just one more form of vicarious entertainment, in this case for people who have the time and luxury of preparing quality meals. Critics also argue that low-income families and farm workers are shut out of the movement, because of the hardship of paying cash at the beginning of a growing season or even on any given week, and these people, as much or perhaps more than others, are in need of fresh healthy food. Others point to CSA arrangements where members have very little connection to the work at all, other than writing a check at the beginning of the season and reading the weekly newsletters. Many farmers still live on low salaries. Relationships among farming couples are strained as ever. Member attrition can be a problem. And even successful farms struggle with under-capitalization.

Looking across the broad landscape of CSA organizations, however, there seems to be a farm somewhere working and experimenting with some solution or mechanism to address all of the above challenges and

...*Peggy* has supper ready before the fire, but has taken time to make us both a little drink. So we sit there, a minute, before the fire, and raise our glasses to each other, and talk about this and that, and fall silent.

*Then we eat well, and clean up the table. Sometimes we call up Gerald Rowan, or somebody, and go to a movie. Or else we stay at home, and listen to music, or play chess, or talk, or read, sometimes aloud, some book that has blood in it. ...*

criticisms. Full Belly Farm offers their members a chance to sponsor boxes that are donated to single mothers. Sixth grade teachers at the Martin Luther King Middle School in Berkeley, California, use a weekly box to teach students about farming and nutrition. (They in turn go home and influence their parents, who transcend many ethnic and economic backgrounds.) The Rural Development Center in Salinas, California, runs a CSA solely for Latino farm workers, to improve the quality of foods available to them. Steve Smith, a third generation farmer in Bedford, Kentucky, believes the CSA is a model that can prevent a number of tobacco farmers from selling their family farms in his region. The members of yet another CSA farm congregate one day before the growing season to hear the annual budget presented and then decide how much each will contribute according to their ability to pay.

Community Supported Agriculture's biggest contribution to the organic farming movement may be its ability to serve as a crucible for a great variety of issues, from public education to health and nutrition to land ownership and agricultural access.

Since Indian Line Farm first offered shares in its apple harvest in Great Barrington, Massachusetts in 1986, CSAs have sprouted up almost exponentially across the United States and Canada (where there were at least 63 reported in 1996). They range from tiny five-member backyard gardeners in San Francisco's Mission District to 800-share operations like Angelic Organics outside Chicago or BeWise Farms in San Diego. CSAs reach as far north as Anchorage, Alaska, span the breadth of Canada, and sweep diagonally across the continent down into Florida. Though I have found no official figures on other countries, I am aware of subscription and core group arrangements in at least a half dozen other countries, including the Netherlands (abonementen), England (box schemes), Australia, Switzerland, Germany and Japan (tokkei).

With a conservative back-of-the-napkin calculation, it is probably a prudent estimate to say that CSAs account for one percent or a bit more of the national organic sales in the United States. That is \$30-40 million. With 1,000 CSAs operating on an average budget of \$30-40,000, this hardly seems unrealistic. This may seem like a mere brush stroke on the big picture of the nation's food system, but what can't be quantified in economic terms is the opportunity that the CSA models

have presented for addressing far-ranging issues about the actual costs of food production.

The term "Community Supported Agriculture" might not exactly capture the true spirit of these pioneering grower/consumer arrangements. The word "supported" is the most objectionable part of the phrase, as it implies that communities are somehow aiding farmers in some way or another. Perhaps "shared," or "stewarded," or "sustained," might be more appropriate. According to University of Massachusetts Extension Educator, Cathy Ross, even pioneer Robyn Van En—who co-founded the United States' first CSA and passed away in 1997—was dissatisfied with the term. "Robyn confided with me toward the end of her life," Ross said, "that she would have been happy with the term 'Agriculturally Supported Communities'."

In his 1955 book *Our Vanishing Landscape*, historian Eric Sloane wrote: "A hundred or more years ago, whether you were a blacksmith, a butcher, a carpenter, a politician, or a banker, you were also a farmer. If you were retired you were a 'gentleman farmer.' Even the earliest silk-hatted and powder-wigged American had gnarled hands that knew the plow and the tricks of building a good stone wall. Before setting out for the day, there were chores to be done that often took as much time as a complete day's work for the average man of today."

Some pine nostalgically for those good old days. Others feel a void of purpose in their lives as the connections to gardening and farmwork have been increasingly severed. While many aspects of yesteryear have and should be happily forgotten, there are still others that are worth keeping and in need of revival. CSAs have by no means solved the myriad of problems facing the small diverse farmer today, but they have at least created a mechanism by which issues can be discussed within the broader community. Perhaps for the first time since the days of the victory gardens, Community Supported Agriculture has brought the dinner table—and diners—closer to the soil than they've been in a long time.



Greg Conniff, Lafayette County,  
Mississippi, 1990

*Then* we put the dogs  
in their kennel, take  
the air a few min-  
utes in the cold  
moonlight, listening  
to a hound some-  
where far away, and  
go to bed.

And after a while, when we are  
lying close to each other, and  
the windows are open, we  
watch the black limbs moving,  
and listen to the wind, or to a  
mouse in the wainscoting, and  
watch the moving firelight on  
the ceiling.

---

*If* there is a god, anywhere, who has done this  
to me, let him hear my thanks.

—Charles Allen Smart



Scott Jost, *Blowing Dust on 36th Street, Northwest of Newton, Kansas, April 2, 1996*

# Ecological Determinism vs. the Jeffersonian Ideal

Wes Jackson

The summer I was fifteen going on sixteen, I abandoned myself to the prairies of South Dakota to work on a ranch belonging to an eccentric and childless first cousin of my mother and her Swedish immigrant husband, Andrew.

Ina was Andrew's second wife; his first had been her sister Bertha. Andrew and Bertha homesteaded one half section and Ina another. When Bertha died, Andrew and Ina married and joined their holdings. This was near the Rosebud reservation, and on Sundays I sometimes rode with half breed kids over those prairies, hearing such stories as to how their Indian grandfathers had trapped eagles on this hill or that.

Andrew, Ina, and I would go to White River on Saturday afternoons. Some of the Rosebud Sioux would lie in the shade of the stores and as the sun moved, they would pick up their belongings and move to the shade on the other side. Out on the ranch Andrew would cuss and swear about how the Indians never did anything with the land. In town, the Indian from whom Andrew and Ina were leasing some land regularly charged groceries to their account. Andrew always paid, for to fail to do so meant that a neighboring rancher would be only too willing to lease that land next year, perhaps forgetting that he, too, would be trapped into buying a bottle of whiskey at the liquor store, and that he, too, would have to tolerate coming upon what was left of one of his steers butchered by the same redskins.

I fell in love that summer at a Saturday night dance. She was a beautiful white girl and her magic was so overwhelming that I swear I failed to sleep the entire night after I met her. Thirty-five years later when I saw her, she was seriously overweight, had lost most of her teeth, her slip was showing, and she neither recognized nor remembered me as she lugged one of her grandchildren into the bar.

---

*This essay is taken from a lecture delivered October 6, 1993, at Mountain View, California. The lecture series, sponsored by the Peninsula Open Space Trust and presented in honor of Wallace Stegner, was entitled "Land and the American Dream." A version of this essay appeared in an earlier Land Report without the photos.*

I think it was the same bar where, as a teenager, I learned more interesting content at lower tuition than anytime before or since. For it was there that I had scrutinized, with the civilized eye of a Kansas River Valley Methodist, drunk cowboys, married or not, who hugged and

smoothered young natives and from time-to-time disappeared into the shadows of the dusty back streets of White River.

The landscape was mostly unplowed then and still is today. The horse, central to that way of life then, is less so now. Out on the ranch, besides the moon and stars, the only lights were of Murdo and Okaton across the river 12 to 15 miles distant. It was a summer of branding, castrating, fence fixing, dens of rattlesnakes to discover, pond bass to catch. Many evenings on the ranch I'd drive out on "the point" in a Cadillac coupe or the pickup to shoot prairie dogs or to see the 100 head of horses in the bottoms or out on the range. "Junk horses," Ina called them, for in the dry 30s she'd pumped water for hours for the cattle, only to have 50 to 100 head of Andrew's horses show up, run the cattle away, and drink all the water. Andrew justified keeping these mostly wild creatures around on the grounds that it was horse trading that had made it possible for him to be so solidly positioned. Now I am amazed to think of the slack Andrew and Ina enjoyed to be able to afford those 100 head of mostly unbroken horses.

I lived in a small wooden hillside shack set up on steel wheels, a shack Andrew had bought from Millette County, which had used it to house the county road crew. It had been pulled by horses, perhaps the same horses used to pull the grader blade. Andrew and Ina lived in a small two-room house with a large attic which bowed from the weight of such old magazines as Andrew's *Life*, *The Saturday Evening Post*, and Ina's *True Stories*, a magazine devoted to idealized romance. There was no electricity, only cistern water which was used at least twice, the last time always to water a small backyard garden or the chickens. Some evenings Andrew and I would sit on his porch, which overlooked the White River a half mile away, and Andrew would cuss Roosevelt, cuss the Yalta Conference, cuss Indians and neighbors and everybody but Ike the President — who happened to be Ina's first cousin, or I suspect Ike would have caught it, too.

With Ina on her buckskin Dickey and me on Bonnie or Violet (names I picked from two of my girlfriends back home), we rode the range from one dam to another, where poles were kept with lures so that we might catch some bass on the way home. Or we might go to the abandoned school on the school section for some cotton seed cake to distribute somewhere across the

Right: Shack, formerly owned by Mellette County, SD, for traveling road crew. Purchased by AJS ranch for bunkhouse in 1948 and parked in midst of never-plowed prairie with the White River in background. Home of author, summer 1952. Power lines and poles not present then.

Opposite Page: Sisters Bertha Stover Swan (left) and Ina Stover (holding horses) on the AJS ranch, late teens or early 1920s, near White River, SD. One year after Bertha died Ina married Andrew, her sister's widower. The house in the background was home to all three.



nearly 4,000 acres of paradise. I didn't want to go home and had it not been for high school football in September, I might have stayed. The place became my American dream.

And yet, looking back, even though Lewis and Clark's Missouri River was only 50 miles downstream, I now see that little of Jefferson's vision was there beyond the section lines and the system of laws. Here the land determined, for no yeoman farmer could exist here. Even so, I loved everything about it — the Indians, the rodeos, the Danish and Swedish immigrants delighted with their land holdings, the rattlesnakes, even the colorful prejudice and the way the natives got a little bit even with the butchered steer, the grocery bill, and the whiskey.

In the Kansas River Valley it had been another story. We were farmers there. Hoeing was endless during the summer, what with watermelons, sweet potatoes, cantaloupes, strawberries, peonies, phlox, sweet corn, potatoes, tomatoes, rhubarb, asparagus, and more. It was a relief to put up alfalfa hay or harvest wheat, rye, and corn (my dad won the county corn growing contest at least three years).

Our market was along Highway 24 and 40, a two-lane highway called the Pacific highway — a subconscious naming, I suppose, because the nation looked westward. Six children were born to my parents. A sister the first born in 1914, I was the last in 1936. Dad was 50 that year, my mother, 42. They were Jeffersonian agrarians — fiercely so, I see now. They were also Methodists and Congregationalists: don't waste time, motion, or steps. Don't drink pop, alcohol in any form, or eat out. The contrast between that truck farm and the South Dakota ranch was striking. The row crops required cultivating and hoeing. Sweat of the brow, good manners, and quotable scripture went together. And in the market, with people stopping on their way from coast to coast, I now sense that we were countrymen then in a way that we are not now. No bad

jokes about either California or New Jersey then. We all inquired into one another's well being.

Here was an agriculture — row crop variety, of course — that I knew and, I will say, loved in a certain restricted sense. But it did not compare to the life of the range, with the juxtaposition of natives and grassland, ranchers and rodeos. I made up my mind I would have that South Dakota ranch one day, or one like it. But Andrew died of prostate cancer and Ina died of injuries sustained in a wreck with her pickup. The ranch was sold and some of the money willed to one of Ina's nephews who, within a year, paid it all out in a lawsuit due to being at fault in a car wreck.

Football and love kept me in college in what must have been one of the most misspent youths in history. And what smoldered in me were two experiences with land: the Jeffersonian agrarian, where sod had been busted, and the life of the cattleman. I preferred the latter.

One of my great-grandfathers had entered Kansas two weeks before the legal date, May 30, 1854, the day the Kansas-Nebraska Act was ratified. Twenty-six years old, he had already been to San Francisco by way of Panama. Fifty miles into Kansas, he broke tallgrass prairie sod and set right to farming his 160 acres, Jefferson-style, interrupting normal life to fight with John Brown against proslavery forces at Black Jack Creek on the Santa Fe Trail in 1857. But a man who was to become his son-in-law, one of my grandfathers, arrived in Kansas in 1877, one day before turning 22, with \$300 to his name. He felt lucky not to have put his money in the bank, for it closed the next day. He thus preserved his grubstake and threw himself out onto the Flint Hills grasslands of Kansas to run cattle on more or less free grass. By the end of ten years he had enough to go in with a partner and purchase 160 acres of sandy loam in the Kansas River valley on the second bench, thereby assured of no more than a flood or two per centum. In five years he had bought his partner out.



I was born on that farm, love those soils, love to plow them, love to smell them. But I have wondered why that grandfather, when the grass had been so good to him, would give up his cattle to farm. I think I know. He had come from the Shenandoah Valley of Virginia. A Virginian! An agrarian! He must have been an unconscious Jeffersonian. He played the role and he played it well for he and his family were well-off when he died in 1925.

As a school board member, he convinced his neighbors that the new school should be completely paid for in the year it was built. It was a fine, well-built school, two rooms for eight grades. My mother and I both went there. How could the community pay such a debt so quickly? I can't speak for the neighbors; I know that Granddad never expanded his income by expanding his acreage, though it was said of him that no matter what he did, things turned out right. I suspect that the explanation can be found in an offhand statement my mother made once. She said that he would lean on his scoop shovel or against the barn for a half hour or more, watching his hogs eat the ear corn or the soaked oats or the boiled potatoes he had raised. As much as his experience was a reflection of the times, it was also a combination of joy, sympathy, art, and love rolled into one and tuned to the demands of his place. Here was the

Jeffersonian dream, as imperfect as it was, at its high water mark. The actuality or reality of that dream has been compromised and in decline ever since, and since World War II at dazzling speed.

In fact, now it seems as if the Jeffersonian dream is like what Aldo Leopold once said about conservation, "a bird which flies faster than the shot we aim at it."

The point here is that on the South Dakota ranch ecological determinism is the major factor. The original vegetative structure must stay intact or a steep reduction in carrying capacity will shortly follow the loss of ecological capital. The loss of biotic diversity will be followed by the flow of nutrients down the White River, downward toward the river Jefferson's emissaries opened up — the mighty Missouri. On the Kansas River valley soils, however, historical determinism rules and Jefferson's ideal can be a reality again. Across the ecological mosaic of this continent exists a range between and beyond these two extremes. Each piece of that mosaic will have to be evaluated as to where it falls on that scale.

# To David and Ida Eisenhower

On the three acres in Abilene, Kansas, the Eisenhower family grew the following: potatoes, cabbage, tomatoes, onions, radishes, lettuce, sweet corn, beets, peas, beans, celery (only one year), cucumbers, strawberries, and fruit trees (cherry, apple, pear). They had a grapevine and grew hay and field corn for their livestock which included two cows, chickens, hogs, guinea hens, and a horse they used for both buggy and plow. They canned and they stored.

Ike's appreciation for what is described here is likely rooted in his agrarian connection.

April 21, 1939

Johnny and I have just completed a trip to the "Bontoc" region of the Philippines, where tribes, called the Igorotes, still semi-barbaric in culture have, over a period of some three thousand years, developed a system of rice raising that involves the terracing of whole mountain sides. Rice is raised in paddies, or relatively small plots, that must be so constructed as to hold water to a depth of several inches. A typical mountain side, prepared for rice raising, therefore resembles a series of gigantic steps, the outside wall varying in depth from two to twenty feet, with the top perfectly level and about a foot lower than the waterproof retaining wall. The water is brought in by several methods, the first of course being by direct rainfall, which in some seasons of the year is extremely heavy. In certain cases, a spring will empty itself into the top terrace, and an opening in the outside wall of that terrace keeps the water at the desired level, and permits excess water to flow down into the next. This is repeated as long as the water lasts. In other cases, where a swift stream boils down the mountain side, a sufficient amount is merely taken off at each level, and where this fortunate condition exists, every inch of ground is cultivated, and the terraces are

---

*Previously published in Eisenhower: The Prewar Diaries and Selected Papers, 1915-1941, this letter is part of the Foltz Papers at the Eisenhower Library, Abilene, Kansas. Reprinted by permission.*

crowded together to take full advantage of the abundant water supply. Since many terraces have been constructed on barren, rocky slopes, the topsoil has been brought in, often for a distance of miles, in baskets carried on the head. Often the slopes are incredibly steep, so that it makes the person raised

on Kansas' flat prairies extremely tired and fatigued just to watch the Igorotes scampering up and down the mountain side.

Since, in the past, some of the tribes were very warlike (it is the country of the so-called head-hunters), the villages were ordinarily built on small, steep promontories, which could be easily defended. From these villages the people have to go daily to care for the rice, maintain the terraces, regulate the water and so on. In the circumstances just going to and coming from work would completely exhaust the average American and leave him unfit for any productive labor.

In some instances a mountain side may be suited to raising of rice except for lack of water. Where a sizeable stream runs through the valley this problem has been partially solved through the construction of irrigation systems. Since the country is mountainous the streams ordinarily have a considerable fall, or drop per mile, so, by topping the river a sufficient distance upstream from the area to be cultivated, it is possible, of course, to bring the water down in a ditch paralleling the stream to the desired spot. But to carry out this simple idea has involved an amount of labor, all of it performed by hand and with only the crudest of tools, that no other people would even have undertaken. We followed one such ditch for several miles, certainly no less than five. Every foot of it was cut out of solid rock, and often, because of the projecting points. On top of all these difficulties was the additional one of getting across the tributaries cutting into the main stream. Whenever these entered, the ditch had to be carried all the way up to the headwaters of the tributary, adding miles to the required construction.

All in all, a visit to the region leaves one well convinced that the rice terraces of the Bontocs deserve to rank, as they do, with the special wonders of man's accomplishments in this world. Moreover, there is no room left for doubting the archaeologists' contention that the terraces were begun at approximately the time of Moses.

The region is difficult to access. The mountain roads, or tracks, are so narrow that one-way traffic, controlled by gates, is compulsory. It is normal to be riding along a narrow winding shelf road, with hundreds of feet of over-hanging boulders and rocks on one side, and a seemingly bottomless abyss on the other. The roads have steep grades and during wet weather, which we had, the frequent slides across the road render it slippery and exceedingly treacherous. We were blocked at one spot by a land slide that was more than one hun-

dred feet in length, and as many deep. A huge pine tree, certainly 50-75 years old, was carried down with the slide and sprawled drunkenly across the road. Luckily we were a few minutes behind its occurrence, and so, instead of being tossed over a sheer drop of some two thousand feet, we had merely to back carefully, I don't know how far, until we found a spot that permitted us cautiously and laboriously, but successfully, to turn around. Then we had to travel an extra hundred miles to get out of the mountains.

When I started this letter, I had no idea of including in it such a lengthy and wordy description of our trip. But since I have done so, I'll try to get one or two prints of pictures Johnny took in the region. They should tell you the story much better than I can.

All of us send love and best wishes to you two.  
Devotedly your son. — *Dwight D. Eisenhower*

## Uncle Peewee

Donald McCaig

I don't believe more than a hundred people live in the countryside around Williamsville, Virginia, and there's fewer than a dozen in town. In a community where everybody knows everybody it is easy to see that John Donne had it right: No man is an island. Every man's death diminishes the rest of us.

We buried Uncle Peewee Wednesday. Preachers and the tax man knew him as "Andrew" Stephenson and that's the name he was given 97 years ago. He was "Uncle Peewee" to everyone for miles around, many unrelated to him. There is no way anyone can aspire to unclehood or campaign for the honor. Though old age is part of it, most old people don't ever become a community's Uncle or Aunt. Wisdom is one requirement. A generous spirit is another. An Uncle or Aunt is someone grown men or women wish they could become.

I first met the man 25 years ago when I was 30 and he was 72. Peewee had made the hay stored in my barn and drove down every other day to take a load on his pickup. The bales weighed 50 pounds and they were awkward and the twine cut my fingers. Uncle Peewee was half my size and twice my age. He bucked two bales to my one and when we finished he asked me how much he owed me for my help.

The men Peewee Stephenson learned from and admired as a boy were veterans of the War between the

States. They taught him the world they knew and some of the world their fathers had known.

The influenza epidemic of 1918 hurt this community and entire families died within a week. Peewee and his brother Bob took up smoking the new tailor-made cigarettes and believed the smoke kept off the germs and saved their lives.

When the first car he ever rode in got up to five miles an hour Uncle Peewee said it felt like he was flying. He tried flying too, once, with one of those barnstormers who took people up for a dollar. Peewee didn't care for it.

Uncle Peewee was a brilliant horseman and rode in jousting tourneys where the horseman gallops break-neck to pierce a small brass ring on the tip of his lance. Uncle Peewee won his last tourney at the age of 76. He was the Knight of Williamsville.

Excepting Sundays, Uncle Peewee worked with his hands every day of his life and though he never got rich, he reared two children, took care of his family, was an elder in the Williamsville church, and owned his own land. He was a horse logger and farmer. He always kept hogs, chickens, horses, cows, and sheep.

Three years ago, in wintertime, 94 years old, he waded the Bull Pasture river hip deep to check on a new born calf. The calf was alright, but on his return trip, Peewee stepped into a hole and was swept downstream 300 yards until he could crawl out. It took him two hours to get back upstream to where he'd left his pickup. For three days he never came out of doors and we all held our breath. But on the fourth day Uncle Peewee came out to look after his animals.

Two years ago, when his wife Pat got sick, Uncle Peewee cared for her, back and forth to the hospital, and was heartbroken when she died. We feared the blow might be too much for him and perhaps it was.

Every community is a gathering place moving through time and when Uncle Peewee died, we lost what he knew but we never thought to ask him about. His humor leavened us. We lost that too. With the death of our last 19th century man, Williamsville has moved entirely into the shiny new 20th century and the ex-confederates Peewee knew so well have slipped farther back into the darkness.

At the end of his life he did not spend many weeks in the hospital and nursing home but they were more weeks than he wished to spend there. Uncle Peewee wanted to come home. Now he is home.



Terry Evans, *Howard Taliferro and his hogs, and Jean and Steve Anderson, Matfield Green, Kansas, 1996.*



**A farm is a very poor place to earn a living in the ordinary meaning of that phrase, and a very rich and splendid place to earn a living in every other meaning of that phrase.**

*I mean in the growing, so to speak, of ideas, sensations, intuitions, feelings, sympathies, and delight in action, all of those things that alone justify work and money.*

*—Charles Allen Smart*

# A Post Script to The Hog Wars

Maurice Telleen

No sooner had Gene Logsdon read "The Hog Wars" in the last issue of *The Land Report* than he was posting a letter to me stating that it was OK but I had overlooked one of the most compelling concerns about the huge confinement lots ... namely disease control. Not just for the pigs but for us, the consumers of pork.

Sure enough, about the time it was published, the *Des Moines Register* carried a front page story that was a 'good news-bad news' type of story about this very subject. The bad news was that "44% of the hogs produced by large operations in such states as North Carolina and Georgia are contaminated with salmonella bacteria, according to the data gathered by the USDA." The good news was that the hogs produced in large operations (more than 7500 head) in the midwest *only* had an incidence of 24 percent.

The differences between the two regions carry through with the same pattern in somewhat smaller operations (see chart). The message was plain. Raising hogs should be left up to us Yankees. Ours are only half as likely to make you sick.

Numerous experts were quoted. An economist from the University of Illinois said, "the implication would be toward smaller producers and toward a shift in competitiveness back toward the midwest." Well, yes. It would seem to suggest that.

Another expert, this one a USDA veterinary epidemiologist, said it could be related to climate. "Maybe in the warmer climate of the southeast, salmonella bacteria are more apt to survive than in the midwest." That, too, would seem to make sense. That may also be the reason that more thermal underwear is worn in Iowa and Minnesota than in North Carolina and Georgia. It isn't the cold so much as the wind chill, and it isn't the chill factor, or even the humidity so much as the fear of salmonella. Anybody knows that.

A couple of experts also were quoted. They had impressive credentials and were equally adept at pointing out the obvious. I was impressed but wanted a second opinion.

So I went up the hill to my next door neighbor, Russ Bruns, and discussed these things with him. He actually makes a living by working at the sale barn a couple days a week, patch farming a few little farms and acreages in the neighborhood with John Deeres that are so old they still go 'pop-pop-pop,' sells a lot of hay to horse people one pickup load at a time all winter

long, markets maybe 150 hogs a year and 25-30 steers, can wire a house, build fence, and nail two boards together.

He also does my chores when I'm gone and borrows my trailers frequently, the stock trailer on the average of 2.6 times per month and the flatbed .7 times a month. (Neither he nor I have any use for anyone who doesn't keep good records. You can't make it in this day and age with unreliable data.) I once took those trailer figures to an expert on borrowing stuff at Wartburg College here in Waverly for analysis. He knew the situation. He needed only to glance at them and quick as a flash he said, "The difference is accounted for by the sale barn connection—animals jump off of flatbeds." Of course it was easy for him. This was his area of expertise.

Back to Russ. He also pays income tax but doesn't brag about it, has an IRA and a mutual fund or two, and he and Nora have raised three good kids. None of them has ever been in jail, nor are they walking around "in search of themselves." And he finds time to play with his grandchildren. Now, if that doesn't qualify him as an expert I'd like to know what it takes.

Russ read the article over, studied those figures, and looked thoughtful. He said he hadn't spent any serious time in Georgia but that he tended to agree that the fear of salmonella was the chief reason we wear long-johns for about four months out of the year.

But he was troubled by the chart. He pointed out that "fewer than 1,000 head was a rather broad category." He would have preferred to see it carried down to 200 or less; 201-500, and 501-999. I would have too, but maybe you aren't a pork producer with less than a thousand. "Yeah," he said, "maybe that's it."

After another couple minutes of studying the data he was ready to interpret it.

He said, "Anybody knows that when your kids start school they drag every bug their classmates are afflicted with home and share it with their little brothers and sisters. And anybody knows that people of all ages tend to be healthier in the autumn because they have been out in God's own sunshine all summer, not cooped up in some climate-controlled house. That is true, I imagine, north or south, east or west. And while salmonella isn't exactly the Bubonic Plague, the same ground rules apply. Bugs jump from person to person, from rat to person, from rat to rat, and—I reckon—from people to

rat, but in that case nobody seems to give a damn except, maybe, other rats."

Long pause. I knew he wasn't through by a long shot.

"Small pox probably killed more Indians than Winchesters. Do you know that in London, England, alone over 150,000 people died of Bubonic plague, and it didn't take but a few years? It was in the early sixteen hundreds. In the days of sailing ships, entire crews would share some affliction and die. A ship was sort of a floating confinement building."

I was beginning to think he would never shut up. So I said, "Russ, I didn't come up here to discuss the Middle Ages or to talk of sailing ships and sealing wax, we were talking about the hog business."

"Yeah, well, think about this. Is a little pig likely to be healthier and happier running around on a patch of alfalfa with his mama or down in the hold of a ship in an environment the creator certainly didn't have in mind for any living creature ... other than bacteria and bugs?"

"But Russ, these things are not the hold of a sailing ship. They have sensors to monitor the gases to detect ammonia and hydrogen sulfide, and the people wear breathing masks, and there are state-of-the-art forced ventilation systems in place. And they have elaborate systems to handle the waste. I mean they are nice. Several even fly old glory out in front of their buildings—like, you know, an Army post or a school or court house."

"Hold it, right there, neighbor. If any city sewage system worked as badly as many of these do, everyone would move out of town. Except the lawyers—they would hang around to file more suits. It would be a ghost town. Like those ramshackle old mining towns in the west.

"Now, as for manure, it has gotten a bad rap. It is a lot like money. Spread around and used in moderation it is both a blessing and a boon to mankind. Get too much of either in any one place and you got trouble. I don't know why people can't see money and manure as kissing kin—they bear a strong family resemblance to one another.

"I suppose you are going to tell me that land is too high priced to raise hogs on. Personally, I don't think it is. Right now, *anyplace* is too high priced to raise hogs on. But you don't have to raise them on pasture. They have these hoop houses and deep bedding systems that

the Scandinavians (your people, Maury) use to good effect. Of course it is hard to raise 10,000 pigs in hoop houses or in A-frames, but who was the first turkey who gobbled that all the pigs had to be raised by a relative handful of people—half of them indentured servants to large corporations. Of course there would be a lot more labor involved, but needing ten, or twenty times as many part time producers, spread around, isn't such a bad deal, is it? Is it?"

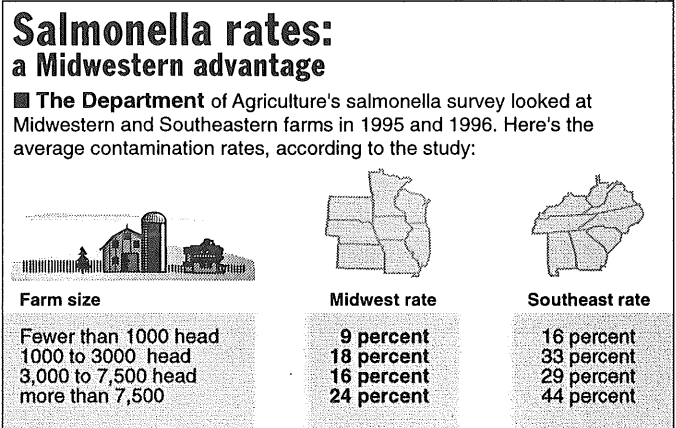
"No, but it doesn't sound very—well—efficient."

I cannot quote his response. "Efficient" was not the right word to use. After the unquotable blowoff, he wound up with "Efficient for who? For some distant stock holder who eats lobster for breakfast? Efficient for the processor? Efficient for who? And how about 'safe'—for the consumer. Cheap food is, I know, our official national policy and has been for years. That is so people can blow most of their money on other stuff and to enable agriculture to 'do it's share' for our trade balance and the global economy—which is another bunch of crap. By the way, did you know that the Crusaders brought the Bubonic Plague to Europe? Yeah, wasn't that a dandy little present for them to lug home. Yes sir, they did. Now, this global economy is sort of like the old time religion gone wild too. Did you know... ."

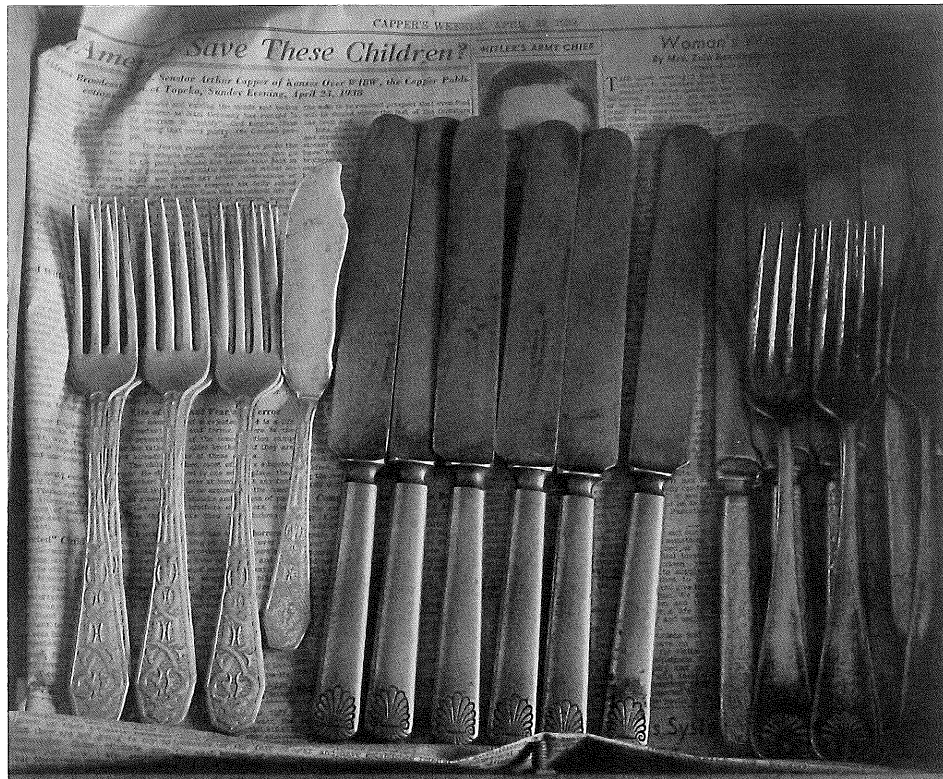
"Russ, I gotta go."

As I climbed into my pickup he said, "By the way, do you need your stock trailer tomorrow? I need to haul a steer and a couple of hogs to the locker."

"No, help yourself, just don't flood the market. It is in enough trouble the way it is."



Matthew Chatterley / *The Register*  
Copyright 1999 The Des Moines  
Register and Tribune Company.  
Reprinted with permission.



Above: Wright Morris,  
*Drawer with Silverware,*  
*Home Place, Near*  
*Norfolk, Nebraska, 1947*

Opposite Page: Paula  
Chamlee, *Creitz Farm,*  
*Adrian, Texas, 1995*

*When I walk over good land and crops  
ruined by droughts and floods, when I  
feel the heat of the sun, and the cold  
from beyond the stars,*

**I feel something a good deal larger  
than ourselves, something without  
any interest in us, something in  
whose presence we simply cannot go  
on being hogs, cowards, and fools,  
and survive.**

—Charles Allen Smart



*There is also a society of trees, which is certainly more important to human society, and is more important to me personally, than the gracious society of flowers. When your old trees, your old friends, are dying, and being hewn into firewood, not only a reasonable attention to the first principles of agriculture, but also an inner hunger, a psychological necessity, demands their replacement.*

**They cannot really be replaced, within a century or two, but as any old person, and especially any old person without children and grandchildren, will tell you,  
a beginning  
is already something.**

—Charles Allen Smart

## The Land Institute Makes History

Two university libraries and the Kansas Historical Society requested the papers of The Land Institute. We have chosen the Kansas Historical Society as the best repository. It seemed logical to keep these materials in Kansas in an institution with excellent staff and new facilities. Boxes of materials have already made their way there and more will be added from time to time. When cataloged and organized, they will be available to researchers interested in our origins, ideas and overall development.

## NSA Research

We have had working meetings with many of our NSA Advisors. Options and opportunities for pushing the research onto a larger stage were explored when three Advisors participated in a membership of ten that included funders and a media representative. We met with six Advisors at the University of Georgia to discuss the future of NSA and to explore the connections between their work and ours. We visited Stephen Jones, breeder of perennial wheat at Washington State University-Pullman and will soon acquire seed from him for our own experiments. Steve is interested in collaborating with us and claims a spark for his original interest in perennial breeding was his exposure to Land Institute ideas as early as 1980. Six Advisors led discussions on various science topics and spent a day to two last summer in our workshop with Graduate Research Fellows. Kendall Lamkey, agronomist at USDA-ARS, traveled with us to visit the Green Revolution research site in Mexico (CIMMYT). The Advisory Team is increasingly a working body and we are grateful for the gift of expertise its members make to our work. Advisor John Doran was instrumental in our participation in a soil science meeting he led in Greece that resulted in new interest in Natural Systems Agriculture from scientists of Greece, England, Austria, Germany, France, Spain and Canada. Advisor Peter Hartel visited and became so interested in soil work Marty Bender was doing that Peter spent the day taking soil samples for analysis and is sending back results important to our work.

Outreach to a variety of other institutions and Advisors included numerous meetings with researchers to expand our exposure and to build a constituency, and with representatives of various major foundations to develop ideas to finance a major research program. A teaching engagement in England was combined with other meetings there: the Queen's biologist, the head of the Royal Botanic Garden-Kew, researchers at a grass-land research experiment station working on intercropping wheat with legumes, and professors who work on agriculture in Africa and Asia.

Alice Sutton, a former employee, returned in a new capacity as greenhouse assistant to David Van Tassel. Our receptionist, Laura Underwood, helped in the greenhouse when the work timing became critical. Our greenhouse is busy. David has a busy schedule of research and will report results following the growing season. David takes the largest responsibility for the Fellows program and has organized the July Fellows Workshop.

## NSA—Fellows Program

In addition to renewing our research fellowship grants to the first five Fellows from last year, we have added eight new Fellows for a total of thirteen. All participated in the Fellows Workshop in July. Fellows submitted proposals to conduct research projects at the master or doctoral level on university campuses; about half are working with professors who are members of our Natural Systems Agriculture Advisory Team. Each project fits the matrix of work planned to bring NSA to fruition. The eight days spent with us at Matfield Green for seminars with staff and with visiting scientists was our opportunity to expose the graduate students to the thought and scholarship that has influenced the work of The Land Institute. The workshop allowed us to get to know the Fellows personally, learn from their insights, and introduce them to the staff, projects, and facilities of The Land Institute. The interaction among speakers, fellows, and people of The Land Institute serves to enlarge and strengthen a still-modest but growing network of Natural Systems Agriculture researchers, to spark new ideas and ways of thinking, new angles from which to approach the scientific research and ethics.



## Sunshine Farm

Farm manager Jack Worman retired this winter with a celebratory dinner and our warm wishes. An era rich with yarns and a one-of-a-kind Kansan has passed!

Marty Bender leads the way in our seventh field season of a ten-year experiment. Two growing seasons beyond this one (through 2002) will complete the second five-year crop rotation. Marty does not need more data on the draft animal and chicken experiments, so 1998 was their last year. This is the first year we have employed a local farmer on an as-needed contract basis to farm most of the plots. Our new man, Charlie Melander, has farmed in the Salina region for many years and uses few chemicals in his own operations (and none in our fields). His equipment is up to date and he makes his living farming, so he must be savvy in the business sense. To accommodate his equipment, we widened our crop strips, maintaining the same rotation

scheme. There is utility in this change beyond mere accommodation—we will also be testing a more farmer-ready regime while holding to the same principles and goals of the ten-year experiment. Charlie's work will allow an energetic comparison of farming scale with our use of small field implements and narrow crop strips in previous years.

Marty has three Sunshine Farm papers accepted for publication, two in review, and four in various stages of progress.

Above: Terry Evans,  
*Spring, Saline County,*  
*Kansas, February 1991*

## Rural Community Studies

Bev Worster, Director of Education for our Rural Community Studies, is really busy now! The Matfield Green Consortium for Place-Based Education, formed under Bev's leadership two years ago, received a funding commitment in March from the Rural Challenge for \$518,965 over three years. Three central Kansas school districts are members: Baldwin, Chase County, and Flinthills. Over 80 percent of the grant monies will go to the schools for new programs developed in this grant proposal.

School districts of the Consortium will implement programs to expand understanding of both human and ecological communities. The proposed curricula will feature the concept of sustainability. Students will learn of the uniqueness of their places. They will relate various school subjects to their home place—the school, its community, its natural and physical place, and its place in the larger world. Interdisciplinary learning and experiential learning are planned, since students learn in various ways beyond books and blackboards. Funding will also support workshops for teachers and additional teaching materials.

Bev has already contributed to in-service teacher planning sessions and organized a week-long workshop in June with co-sponsor Emporia State University, which offered optional college credit. "The Tallgrass Prairie: Reading the Landscape of Home" was attended by 24 people including 19 teachers from Consortium schools. The day after, Bev led 20 teachers, administrators, and community members from the Consortium districts in a curriculum planning session that was joined by three university observers.

## Prairie Festival

A late switch of program titles became necessary and Prairie Festival 1999 featured "The Agrarian Mind in an Industrial World—The Industrial Mind in an Agrarian World," with a fine cast of characters that ranged (alphabetically) from Wendell Berry to Ann Zimmerman. More than 350 people participated in the weekend, and it was the first in awhile in which we missed extreme Kansas thunderstorms.

## Public Notices

A chapter on "Natural Systems Agriculture" by Jon Piper appeared in *Biodiversity in Agroecosystems*, Wanda Collins and Calvin Qualset. A major article by Scott Russell Sanders, "Lessons from The Land

Institute," appeared in the March *Audubon Magazine*. Hugh Sidey of *Time* mentioned us in "America's Last, Great Factory for Decency," *Progressive Farmer*.

Filming at The Land Institute included *Lost Landscape* by a freelance group. An appealing film *The Living Land* features four segments on food including The Land Institute, John Jeavons, chef Alice Waters of Chez Panisse, and organic farmer Mas Masumoto. We were part of a PBS Kansas program *Farming the Wheat State*.

Wes Jackson taught one week of a three-week course on biotechnology at Schumacher College in Devon, England. Presentations included participation in a symposium of the National Academy of Sciences meeting at the University of California at Irvine on "Plants & Population: Is There Time?" Two presentations on agriculture were made to foundation boards, and we participated in a panel at the Environmental Grantmakers annual retreat. We made presentations in meetings at Columbia University, Kansas State, Dartmouth, University of Missouri—Kansas City, and Union College. Media attention included a local week-long radio call-in program assignment and numerous interviews with AM and FM stations across the country.

## About the Authors...

Wes Jackson

In this issue, as in the last, we are featuring articles by **Wendell Berry**, **David Kline**, and **Maury Telleen**, all farmers, all unapologetic agrarians.

**Dan Imhoff** is a free lance writer who lives in Northern California with his wife and two small children. They have recently come to a piece of land they are learning to know.

**Mary Mackey** is a poet and author of several novels. She is a professor at California State University at Sacramento.

**Don McCaig** likes to write books about dogs and other living things all of which are extraordinarily good tales. He lives on a 280-acre farm in Williamsville, Virginia, with his wife Anne and five border collies.

**Charles Allen Smart** was born in Cleveland in November 1904; his family moved to Long Island when he was about 12. He died in Chillicothe, Ohio, in March 1967. His books are: *New England Holiday* (novel, 1931); *The Brass Cannon* (novel, 1933); *RFD* (memoir, 1938); *Wild Geese and How to Chase Them* (philosophy, 1941); *Sassafras Hill* (novel, 1947); *Roscommon* (novel, 1948); *The Green Adventure* (play, 1954); *At Home in Mexico* (essays, 1957); *Viva Juárez!* (biography, 1963); *The Long Watch* (autobiography, 1968); and *Letter to a Sunday Writer* (essays, 1969).

## About the photographers...

Terry Evans

In this issue, as in the preceding one, we feature the photography work of **Paula Chamlee**, **Greg Conniff**, **Scott Jost**, and **Terry Evans** whose sensibilities are about care of land and people together.

We are pleased to add the work of **Solomon Butcher** and **Wright Morris**. Butcher photographed Custer County, Nebraska, from settlement with sod houses to later white picket fenced yards, with an eye for the details of the domestication of the prairie. Morris also photographed Nebraska, but later in the 1940's. His work is an early elegy for rural life on the prairie.

## Audio Tape Order Form

Selected recordings from

# Prairie Festival 1999

## The Agrarian Mind in an Industrial World—The Industrial Mind in an Agrarian World

Presented by The Land Institute, Salina, Kansas, May 28-30, 1999

Qty.	Session Title	Speaker(s)
<b>Saturday, May 29</b>		
___	S1 The Urban Agrarian Mind	David Orr
___	S2 An Agrarian's Approach to a Shrinking Domestic Livestock Gene Pool	Maury Telleen
___	S3 A Reading	Wendell Berry
___	S4 If Pork Belly Futures are Getting You Down, Try Poetry Futures	Bill Holm
___	S5 Ecological Design: Integrating the Industrial Society with the Imperative of the Land	John Todd
___	S6 Chautauqua: Julia Louisa Lovejoy & John Brown	Armitage & Stottlemire
	Chautauqua Discussion: with Wendell Berry, Conn Nugent	Don Worster, moderator
<b>Sunday, May 30</b>		
___	SU1 Cuban Responses to the Crises of Industrial Agriculture	Chris Picone
___	SU2 Communicating Intelligence: Larger Mind and Common Sense	Nancy Jack Todd
___	SU3 Homesteading	Annick Smith
___	SU4 Peasant Economy and Mini-industry	Eduardo Casas Díaz
___	SU5 This Land Is Your Land—Or Is It?	Angus Wright
___	SU6 In Dialogue	Casas Díaz & Wright
___	SU7 Prairie Festival Wrap-Up	Wes Jackson



Total number of tapes x \$8.00= \_\_\_\_\_  
 \_\_\_ Full Set(s) x \$94.00 \_\_\_\_\_

**Subtotal:** \_\_\_\_\_

For Mail Orders within the U.S.,  
 add Shipping and Handling: \_\_\_\_\_  
 (\$1.50 first tape,  
 \$.50 each additional tape  
 \$18.00 maximum)

Colorado Residents add 7.46% Sales Tax \_\_\_\_\_

**Grand Total:** \_\_\_\_\_

For **Canada**, DOUBLE  
 shipping amount. For  
**Mexico/Overseas**,  
 TRIPLE shipping amount.  
 Orders are sent Air Mail  
 and are guaranteed for 60  
 days.

Name \_\_\_\_\_

Company Name \_\_\_\_\_

Address \_\_\_\_\_

City \_\_\_\_\_

State \_\_\_\_\_ Zip Code \_\_\_\_\_

Phone (\_\_\_\_\_) \_\_\_\_\_

Credit Card: \_\_\_MC \_\_\_VISA \_\_\_Discover

Card # \_\_\_\_\_ Exp. \_\_\_\_\_

Signature \_\_\_\_\_

### Mail Order Payment Policy

We accept checks or money orders (US funds only) and MC, VISA or Discover credit cards. Credit card purchases may be made by fax or phone, or by filling out this form and mailing it to:

**Perpetual Motion Unlimited**  
**1705 14th St., Suite 396**  
**Boulder, CO 80302**

**Phone: (303) 444-3158**  
**Fax: (303) 444-7077**

## Gifts

*In honor of Michele Koski*

**from Dorothy F. McNeil**

*In honor of Wilfred & Audrey DeVries*

**from Gretchen DeVries**

*In memory of Ben & Mary Smith*

**remembered by**

**Lucy M. & E. Leonidas Smith, Jr.**

### Donors \$50,000 +

The William & Flora Hewlett Foundation

### Donors \$1,000 to \$9,999

Airport Business Center Foundation  
Emma Balsiger Foundation, Inc.  
Chez Panisse Foundation  
Ann & Peter Forbes  
Global Environment Project Institute  
Richard & Rhoda Goldman Fund  
Mark Gordon  
The Roy A. Hunt Foundation  
John R. Hunting  
Kansas Corporation Commission  
Sidney A. & Carole McKnight, Jr.  
Paul Nachtigal & Toni Haas  
Dennis O'Toole  
Oak Lodge Foundation  
Victoria & George A. Ranney, Jr.  
Robert C. Sargent  
Simpson Foundation  
Lucy M. & E. Leonidas Smith, Jr.  
David S. Swetland  
Paul Thomas  
Frances K. Tyson

### Donors \$100 to \$999

Adorers of the Blood of Christ  
Gregory S. & Jill Allen  
Milton Andersen  
Sam & Beckie Anderson  
Professor Richard E. Andrus  
Kenneth B. & Katie Hart Armitage  
Dr. Richard C. Austin & Anne Leibig  
Susan M. Baker  
Marian J. Bakken  
Gene Bazan  
Robert E. Beers  
Benedictine Sisters  
John L. Bengfort, M.D.  
Bennington State Bank  
Ed Berg  
Thomas W. Berry  
Paul G. & Mary W. Birdsall  
Henry D. & Mary G. Blocher  
Arnold N. Bodtker  
Richard D. Borevitz  
George H. & Elizabeth B. Bramhall  
Joyce Brink  
David A. & Carolyn S. Brittenham

Dr. & Mrs. Robert Brizee

Owen S. Brown  
Robert S. Brown  
Browns Farm Inc.  
Paul T. & Genevieve D. Bryant  
Jerry D. Busch  
John B. & Eleanor S. Butler  
Lorene & William A. Calder, III  
Central Colorado Educational Trust  
Wayne A. & Judith M. Christiansen  
David C. & Frances E. Coleman  
Henry Crew  
William C. Cutler & Elisabeth Suter  
Mark & Bernice D'Souza  
D. Alex Damman  
Dr. William D. & Kristine B. Davis  
Andrew G. & Barbara T. Dregallo  
Fred Y. Durrance  
Paul R. & Anne H. Ehrlich  
Robert L. & Marilyn Sue Eichhorn  
George & Jill Emmert  
Robert G. Esbjornson  
Elizabeth Farnsworth  
Christian G. Fellner  
Laurence B. Flood  
Don M. & Mary Anne Flournoy  
Mr. & Mrs. Harvey J. Fried  
Fuller's Auto & Truck Recycling Center  
Garvey Center CIHFI  
Jane A. Gauss  
Karen & Bob Gould  
Professor David O. Hall  
Bradley C. Halter  
Benjamin & Lucy Bardo Harms  
Anne Burns Harris  
Julie & Phil Hart  
Peter G. & Mary Jean Hartel  
Bert & Dawn Haverkate-Ens  
John Hay  
Lois F. & Charles M. Hayes  
Phillip & Sally Holman Hebert  
Peter R. Hegeman & Patricia Egan  
Norvin J. & Jeanne H. Hein  
John M. & Susan S. Heyneman  
Dr. Stanton F. & Carol Hoegerman  
Karl F. Huemmerich  
Terry A. Hughes  
IBM Corporation  
Hunter Ingalls & Mary Emeny  
Scott Jamison, M.D.  
Richard Janopaul  
Geraldine Johnson  
Sally M. Kendall  
Kelly Kindscher  
O. Newton King  
F. Kirschenmann & C. Raffensperger

## Thank you to our contributors, January through April 1999

Don Kluever  
Terry Larrimer  
Winfred M. Leaf  
Eileen M. & Paul F. LeFort  
Richard D. & Virginia L. Lepman  
Ann R. Loeffler  
Tom Mahoney  
Paul Mai  
Charles R. & Barbara J. Maier  
James R. & Nanette M. Manhart  
Margaret P. Manlove  
Kevin L. Markey  
Marcia S. & Michael W. Mayo  
Mary McCall  
Tom & Linda B. McCoy  
Margot F. McMillen  
Rex D. & Sally M. Miller  
Roger & Margot W. Milliken, Jr.  
Grover Mitchell & Harriet Hodges  
Odette Mortenson  
John Dirck & Suzanne B. Moyer  
William D. & Dorothy M. Nelligan  
Robert P. Newman  
Larry O'Neill  
Frank O'Sullivan & Hattie Gresham  
Michael & Kathleen J. Oldfather  
Stephen H. & Susan P. Olsen  
Jerry C. & Carole Packard  
Jack Parr  
Pathfinder Fund  
Marty & Kyoko Peters  
Daniel W. Pettengill  
Dr. Susan F. Pokorny  
Pure Prairie Natural Foods  
Marcus E. Remple & Hannah J. Gascho  
Jean I. & Stephen L. Retherford  
Martha Rhea  
Margaret G. & John P. Richey  
Roger M. Richter  
Michael E. & Kathleen F. Riordan  
Professor Norman Saul  
George Schloemer, M.D.  
Peter C. & Helen A. Schulze  
Gary F. & Camille E. Seamans Foundation  
Miner & Valetta Seymour  
Ida Jane Shipman  
Peter D. Simonson & Pamela P. Talley  
Professor Charles F. Sing  
The Sinsinawa Dominicans  
Sisters of St. Francis of Tiffin  
Skyview Laboratory, Inc.  
Dr. Jane Smiley  
Robert F. & Judith D. Soule  
St. Joseph Foundation  
Marshall P. & Janice M. Stanton  
Marion Stein  
Betty C. S. & John R. Sterling  
Tony J. & Patricia P. Stoneburner  
Harold Supernaw  
L. F. Swords  
George H. Taylor & S. Candice Hoke  
Jim Ted & Rosa Lea Taylor  
Beth E. Thompson  
Margo Thompson  
John A. & Linda L. Thornton  
Faith Hunt Tjardes & Peter W. Leach  
Gary Allen & Donna June Via  
Steven G. & Elaine A. Waltz  
Laurie Ward

Richard T. & Barbara R. Ward  
Charles A. Washburn & Beatrice Cooley  
Leonard J. & Margaret M. Weber  
Robert B. & Judith S. Weeden  
Professor Ray R. Weil  
Suzanne R. & Frederic D. Weinstein  
James M. Wellman  
Paul West  
Jan L. Wheeler  
Robert L. & Katie White  
Thomas K. & Jancina L. Wilson  
Professor William C. Wimsatt  
Windy Hills Farm  
Parker & Lillian H. Worley  
Angus Wright  
David Wristen  
Ann M. Zimmerman  
David & Ann Zimrin

### Donors \$50 to \$99

Jeffrey Adams  
Nancy L. Adams  
Agro Innovators International, Inc.  
Angela A. Anderson  
John H. & Marsha A. Anderson  
Edwin L. & Marilyn A. Armstrong  
Thomas J. Arneson  
B & F Heating & AC Inc.  
Sydney Backstrom  
John S. & Nora B. Baker  
Jonathan Barker  
Karen L. Barlow & David L. Reese  
Mark & Ronda Barnes  
Robert C. Barrett  
Susan Beachy  
Janet Bender Family  
Kent M. Berkley  
Marcia A. Francisco & Joe R. Bickford  
George W. & Marie Anne Bird  
Charles R. & Dianne E. Boardman  
Jim Bockheim  
Patrick J. Bohlen  
Mark Bohlke  
Jay K. & Sara Bremyer  
Brookville Hotel  
Rex C. & Susan Schuette Buchanan  
David L. Buckner  
Buckskin Valley Farms  
Thomas E. Bullock  
Robert Carnevale & Denise Deleo  
Dale M. Carter, M.D.  
George & Marilyn Chlebak  
Marshall Chrostowski  
City of Santa Monica  
Wallace & Nancy L. Condon  
Marc Cottrell & Patty Sheehan  
Coulter Farm  
C.L. Crenshaw & Catherine Sloss Crenshaw  
Pamela Cross  
Arthur Crisfield  
Dennis & Ruth Demmel  
Will Dibrell & Beverly Bajema  
Dr. John Doran  
William A. & Pat L. Dorman  
Mr. & Mrs. Lloyd C. Dumenil  
Leonard Eaton, Jr.  
Rebecca Edwards  
Stefan C. & Margaret E. Smith Einarson  
Myron L. & Deborah L. Elliott  
Anne Epstein

Beverly B. & Lawrence W. Everett  
Margaret S. & S.A. Ewing  
Steven L. Fahrion & Patricia A. Norris  
Charles S. Faulkner II  
Lisa Ferentinos & Solomon W. Kaahaaina  
Madeline Finch  
Frontier Cooperative Herbs  
Thomas A. & Polly A. Fry  
Bozena Gawlikowska  
Jared N. Gellert & Cindi Maggied  
D. C. & Shirley A. Gerstenberger  
Charles Gessert, M.D.  
Jay R. & Linda K. Goering  
Professor Frank B. & Priscilla M. Golley  
Michael R. Gore & Betsy Crawford-Gore  
Rachel Greenwood  
Charles G. & Patricia A. Grimwood  
Thomas F. Griswold  
Donald Hagedorn  
Philip M. & Patricia A. D. Hahn  
John A. Hamilton  
Agnes N. Haury  
Daniel L. & Margaret A. Hebert  
Linda & Jeffrey Hedquist  
Professor Nicholas & Suzanne Helburn  
Ronald H. Henricks  
Stephen & Marcia Hill  
William McLin Hill & Laura Selleck  
Joe & Virginia Hillers  
John J. & Gloria J. Hood  
William Hornung & Marguerite Desotelle  
Linda Hurst  
Keith T. Iosso  
Laura Jackson & Kamyar Enshayan  
James L. Janzen & Carol Knieriemi  
Haley Johnson Design Company  
Ronald S. & Kathleen D. Johnson  
Raymond N. & Lola Johnson  
Steven Tsunoma Johnson & Mary Johnson  
Andy Kegley & Nan Fullerton  
Kegley  
Ken Kesey  
Jeff Knight  
Ulrich Koester & Beth Kautz  
Jeff Kolnick  
Doug & Pat Kramer  
Larry A. & Sharon E. Kramer  
U. Beate & Mara Krinke  
Nelda B. Kubat  
Robert C. & Margaret A. Laatsch  
Paul W. & Pamela P. Lander  
Lloyd Larsen  
Loren C. & Elizabeth A. Larson  
Shaffia Laue & Gary Minden  
Jerry & Eleanor Leeper  
Paul M. & Jeanine M. Lovell  
Angie Lux & Donna Betz  
Chuck & Joey Magerl  
Mary K. Marsden  
Marcie Fisher Marston & John Bradley Marston  
Matousek Farms, Inc.  
Lane & Janet M. McDonald  
Helen McElree  
Deborah K. McKinley  
Michael & Laurel McNeil  
Mr. & Mrs. Sidney McVey  
T.H. & Kathleen Milby  
Nancy & Frank Miles  
Stephen C. & Joanna M. Mitchell  
Barry K. Moir & Laila Goodman  
H. Stewart & Joyce Moredock  
Dale L. Morris

David D. & Wendy L. Moshier  
Thomas R. Neet, Jr  
Pamela S. Nelson & Michael A. Spindler  
Arthur K. & Connie S. Neuburger  
J.F. New & Associates, Inc  
Edward Newman  
J. Clyde & Martha Nichols  
Jim Nickel  
Rae Ann Nixon  
Bruce Noble  
Douglas Nopar & JoAnn Thomas  
Mrs. H. W. Betty Olsen  
Maurice E. Olson  
Paul A. & Elizabeth Olson  
Richard Ouren  
W. Dean & Doris Owens  
Packaging Systems  
Joel D. Palmer  
Kelly & Sandy Parker  
Rachel M. Pearson & Jose R. Batres  
Marroquin  
Kenneth V. & Ana M. Pecota  
Dr. Gregory K. Penniston  
Joy B. & James W. Perry  
Joan Peterkin  
John A. Pollack  
Robert C. & Susanna R. Monroe  
Porter  
Eric E. & Lora Thompson Powell  
Alison G. Power & Alexander S. Flecker  
Marvin & Allison Pritts  
Jansje M. Pruyser  
Gregory A. Boris & Joan L. Reddy  
Raymond & Gladys Regier  
Mr. & Mrs. Paul W. Renich  
James D. Rogers  
Douglas E. Romig  
Harry & Dorothy M. Rubin  
John F. Samsom  
Jan Savidge  
Susan Chady & Louis T. Schneider  
Lee & Peter Schoenburg  
Steve Schuur  
Coease Scott  
Karl Seeley  
Carolyn L. Servid & Dorik V. Mechau  
Julianna Shaull & Eric W. Howland  
Martha S. Skillman  
Fred Smeds  
James R. & Katherine V. Smith  
Lola & John G. Smith  
Wayne & Claudia Smith  
Dr. Robert B. & Marianne K. Smythe  
Seymour & Sara H. Sohmer  
Andrea Sonnabend  
John Steggall, Jr. & Martha Quenon  
Jeffrey R. & Rebecca J. Stoupe  
Gail E. Stratton  
Shirley J. Stuart  
Linda Suelter  
Matthew & Elaine Brown Sullivan  
Cynthia A. Taylor & Luis A. Bravo  
Janice R. Thompson  
Robert E. Thompson  
Sally Thompson  
Charles J. Transue  
W. A. Turnage  
Virginia L. Usher  
Walt Utroske  
Veritable Vegetable  
Fay B. Watts  
Kenneth G. & Dorothy L. Weaber  
Lee Weidman  
Charles W. & Barbara Wertz-Leiden  
Warren & Geneva Weston  
Ardene Whittlesey

Fredrick & Linda Williams  
Richard K. & Diana D. Williams  
Kristin J. & D. Morgan Wilson  
Susan H. Winslow & Fred P. Karns  
Barbara L. Winternitz  
Jean C. Withrow & James J. Haggerty  
Gretchen Woelfle  
Charles Woodruff, Jr.  
Austin C. & Ramona Wright  
Thelma Wright  
M. Louise & James J. Zaffiro  
Dr. Dewey Ziegler

**Donors to \$49**  
Acme Construction  
Michael L. Adam  
Mary Ragan Adams & Franklyn Garry  
Steven A. Aftergood  
All Seasons Chalice Church  
All-Around Garden Service  
Charles S. & Virginia E. Allen  
Roy T. & Bly M. Allen  
Thomas L. Altherr  
Ann E. Amyes  
Frank J. Anderson  
Karen Anderson  
Laura Elizabeth Anderson  
Robert D. & Anne Angus  
Steve Apfelbaum  
Richard E. Archer & Jill Archer  
Bremyer  
Tom M. & Barbara G. Armstrong  
Jim Aronson  
Stefanie Aschmann  
Nancy & Dean V. Aspelund  
David H. Atchison & Christine Crider  
Wayne L. & Joyce Attwood  
David Axland  
Barbara Babcock  
Jeanne A. & Robert A. Baker  
Scott Bakke  
Lawrence C. & Mary J. Baldwin  
William C. & Terry B. Baldwin  
Robert Bangerter  
Jane Beckett Barabe & Joseph Barabe  
Thomas B. & Anne M. Barker  
Michael D. & Pamela S. Barrett  
Steve Barry  
Prof. Albert A. & Eleanor R. Bartlett  
Connie Battaile  
Paul Beardsley  
Conger Beasley  
David Bedan  
Mary E. Beebe  
Eleanor H. Bell  
Kathy Bell  
Charles Benbrook  
Mayrene E. Bentley  
Dr. Jeri L. Berc  
Thomas Berg  
Ted Bernard & Donna Lofgren  
Edward & Varsenik Betzig  
Blackwood Building Group  
Ross & Lorena Blount  
Patricia R. Boehner & Bahman Eghball  
W. Lamar & Mary Faith Bollinger  
Kathleen Krehbiel-Boutis & Nikos Boutis  
Sheryl D. Breen  
W.A. & Joan Brock  
William & Susan C. Brooks  
Martin E. Brotherton  
Alice Broughton  
Charles S. & Dianne Brown  
Cheryl L. Brown

Hugh J. Brown, Ph.D.  
Charles A. & Joanne B. Bryan  
Mary Martin Buhl  
Jim & Wileta Burch  
Erik & Jessyca C. Burke  
Sheldon E. Burr  
David Burris & Meredith McGrath, DVM  
Beth Elpern Burrows  
Peter J. & Toshiko Busch  
Patrick F. Byrne  
B.J. Caldwell  
Peter D. Callahan & Kristin R. Poppo  
Pat Cameron & Geneva Hershberger  
Cynthia Curlee & Robert C. Camp  
Jim & Carressa Carlstedt  
Norman M. Carr  
Cascadian Farm  
William P. & Kristine Casey  
Robert Cashman  
James P. & Marianne G. Cassidy  
Victor Cassidy  
Michel Cavigelli & Martha Tomecek  
Jeffrey A. Chandler  
Kelly D. Cherrey  
Chesapeake Wildlife Heritage  
Kenneth & Belgin Church  
Beth Cigler  
City of Boulder  
Katherine L. Clancy  
Sharon A. Clancy  
Elizabeth C. Clark  
John G. & Lois E. Clark  
Regina Clark  
Marcia & Robin Clouser  
Jody E. Clowes & David B. Driscoll  
Suzanne D. & Peter Z. Cohen  
Christopher Cokinos & Elizabeth Dodd  
Kathy Collmer & James D. Scharplaz  
Jack A. Collom & Jennifer K. Heath  
Toots Conley & Eugene Talkington  
Bryan Connolly  
Rosalind L. Cook  
David C. Cooper  
Joyce Coppinger  
Brian Coupal  
Charlotte M. Crabaugh  
Marc A. Craddock  
Rhonda & Kyle Crawford  
David S. & Kim Criswell  
Marie A. & Donald Curtis  
Marcus H. & Cynthia G. Cutter  
Francesca D'Anne  
Seth M. Dabney & Deborah A. Chessin  
Dahl & Associates, Inc.  
Dennis & Judith Dailey  
Dr. Robert F. & Anna M. C. Dale  
Mary Damm  
Joan Darrow  
Adam S. Davis & Amy C. Hassinger  
Jordan & Gail Dawn  
Richard G. & Eleanor W. Dawson  
Barbara Dean  
Wesley F. & Verda G. DeCoursey  
Sandy K. & Darrell R. Dedrick, DDS  
Gretchen DeVries  
Martha Dickinson  
John L. & Corrine Cummins Dietz  
Barbara Dilly  
Dennis R. Dimick  
Robert M. Dixon  
Professor John & Rosemarie Dolan  
Larry Dolan  
Mark Doyle  
William R. & JoAnn Drews

Pat Duclos  
James F. & Mary N. Dudley  
Ross E. & Carolyn H. Duffy  
Gail Ellen Dunlap  
David Durand  
Harold P. & Elva Mae Dyck  
Ralph & Roma Earles  
Albert Ebers  
L.G. Eddy  
Thomas A. Eddy  
Galen Eiben  
Jean G. Elle  
Neil W. & Barbara Lee Elliot  
Philip R. & Betty Lou Emmons  
R. Todd & Kimberly Kelling  
Engstrom  
Eldon Epp  
Marge Erickson & Wesley Roe  
Michael J. Ettema  
Elizabeth M. Miller Evans & Carl D.  
Evans  
Claryce Lee Evans  
Harry Everett & Beverly Gattis  
Michael Ewanciw  
Sean L. Feder  
Ralf Fellman  
Don Ferber  
Rebecca V. Ferrell & Michael J.  
Golec  
Donna L. Feudner  
John W. & Carolyn Fichtner  
Augusta Field  
Amanda Field  
Jeffrey M. Filipiak  
Karen Finley  
Neal T. Fitzpatrick  
A. Anne Focke & David Wahler  
Viola Bundy Fort  
Dana K. Foster  
Robert H. & Kathryn M. Foulkes  
Mr. & Mrs. Edward C. Frederick  
Kevin L. Freed & Anne B. Russell  
Rachel R. Freifelder  
Stan & Jane Freyenger  
Wesley & Claudine Fujii  
Richard S. & Judith M. Furr  
Garden City Community College  
Garfield Farm Museum  
Brant & Mary Ellen Gaul  
Mavis M. & George M. Gehant, III  
Joseph V. & Janette A. Gelroth  
Carolyn Cox George  
John Edward Gerber III  
Dr. Paul Gersper  
Phillip R. Gibson  
Robert L. Giel  
Mark M. Giese  
Gerald L. & Mineko S. Gillespie  
Paula J. & James E. Glackin  
Michael A. & Karma E. Glos  
Joe Glosemeyer  
Frank Gohlke & Lucy Flint-Gohlke  
Eliza Goodwin & Raquel J. Melo  
Jean Gordon  
Oscar A. & Margaret F. Gottscho  
Anna Noel Graether & Greg B.  
Schultz  
Robert Grant  
John E. & Margery Graves  
James R. Gray  
Bill Green  
Laurie C. & G. Garner Green, Jr.  
Gregg T. Greiner, DVM  
Joseph Griffin  
Robin Waldo Groose & Patricia Ann  
Casey  
Pete A. & Elizabeth E. Gunter  
Peter Gustafson & Kelly M.  
Champion  
John Gylleck

Michael Habeck  
Margaret M. & James M. Hall III  
Eldon & Margaret Handrich  
Susann Hannah  
Lloyd B. Hansen & Margaret R.  
Tuma  
Art & Natalie Hanson  
Randall R. & Saralyn Reece Hardy  
Kirk V. Hargett  
Pamela J. Harris  
John Hart & Jane Morell-Hart  
Kristina Hartell  
Ben Hartman  
Gary S. & Lynne Hartshorn  
David T. & Judith L. Harvey  
Doug Harvey  
Robert Haughawout  
Palmer R. & Lydia F. Haynes  
Hedge Haven Farm  
Maija Heimo  
Michael Hemer & Carolyn Blasdell  
C.M. Hendrycks Apiaries  
Eric & Mary Herminghausen  
Allan P. & Mary F. Herring  
Miriam Herrmann  
Anna Hersperger  
Hibbard Family Trust  
Steven & Annabeth Hind  
William E. Hine, Jr.  
Dr. Allen Gene Hirsh & Rhonda J.  
Weiss  
Jon Hoefler  
Stan C. & Karen Hokanson  
Brian & Kathy Holck  
Craig & Henrike Holdrege  
Troy Hollar  
Jenny E. Holmes  
Donald M. Homan  
Wayne Hongsermeier  
Bruno Hoppe  
David Hoskins  
Loren B. Hough  
Mark L. & Linda K. Howard  
Andrew Hryniewicz  
Jerold & Bonnie Hubbard  
Darrell K. & Bunny E. Huddleston  
Deborah A. Hunsberger  
Helaine Hunscher  
Jon C. & Audrey F. Hunstock  
Gerald J. & Kristin L. Irissarri  
Griggs Irving  
Margaret Jagger  
Jean-Luc Jannink  
Robert W. Jensen  
Harry J. & Ann L. Jett  
David M. Johns  
Bruce L. Johnson  
Carl L. & Linda K. Johnson  
Charles W. Johnson Jr.  
Heather Johnson  
Julie A. Johnson  
Larry L. & Pamela J. Johnson  
Marlin Johnson  
Dr. Michael G. & Gwyn E. Johnson  
Nina & Orval Johnson  
Roland A. & Margaret Johnson  
Vernon L. & Betty M. Johnson  
Daniel G. Jones  
Jimmy R. Jones  
Sharon Joyer & Patricia Nagle  
Jon Judson & Kay Neumann  
Richard & Beverly Kai  
Edward Kail  
James F. & Julie Kanady  
Susan Kanamoto  
Gretchen Kehrberg  
Harold W. & Brenda J. Keller  
Doug Kelsey  
Arlana R. Kemp & Richard A.  
Nethercut

Kay Kenton  
Mark Kepkay  
Stephan M. Kettler  
Thomas R. & Lorna J. Kilian  
Ken F. Kirkpatrick & Deborah L.  
Davis  
Ted Klaseen  
Gary Klearman  
Lance R. & Melanie Klein  
Rev. John J. Kleinwachter  
Mark C. Klett  
Donald S. & Elizabeth A. Klinefelter  
Clayton A. Knepley  
Rob Knowles & Meryl Stern  
David Knox  
Reggie Knox  
Heike Koester  
Donald Koke  
Walter J. & Barbara J. Koop  
James Koplin  
Seppo A. & Terttu K. Korpela  
Cleo D. & Ellen Kottwitz  
Verna & Conrad O. Krahling  
Kerry Kramer  
Pat Kramer  
Connie S. Kreider  
Thomas A. Kreissler & Laurie  
Matthews  
Keith W. Krieger  
Douglas D. & Janet G. Krueger  
Paul B. Kubista  
Gregg C. & Gretchen P. Kumlien  
Erika Kunkel  
Keith A. & Marian J. Kuper  
Gretchen La Budde & Michael  
Whaley  
Patricia Labine  
Mark & Robin Lacey  
Larry Lack & Lee Ann Ward  
Mary Lageman  
Duane Lahti  
Beth Lambert  
Michael Landers  
The Landscape Studio  
Senator Gerald Lange  
Marvin Lange  
Julian R. Larson  
Kris Larson  
Konney J. Larwood & Patricia J.  
Mettler  
Laura's Lean Beef  
Roy M. Lechtreck  
Mary L. Lehmann  
Susan Lennhardt  
Leopold Center  
Charles A. & Jennifer Lewinsohn  
Lawrence B. & Ruth G. Lewis  
Myrna Liebers & Paul White  
Matthew Liebman & Laura C.  
Merrick  
Joseph G. & Beatrix U. Lindquist  
Don & Nancy Link  
Carolyn E. R. Litwin  
Jerry Lockhart  
Jakob R. & Tamar M. Loewenberg  
Matthew Logan & Felice Stadler  
Bernard E. & Diana C. Long  
Jonne A. Long  
Dr. & Mrs. Herlan Loyd  
Anne E. Lubbers  
Drs. Michael & Sue Lubbers  
Thomas A. Lumpkin & Leslie R.  
Elbersson  
Zach Lynch & Casey Crawford  
Lynch  
Lynn Abstract Co., Inc.  
Victoria Lynne  
James D. & Susan B. Lyttle  
Ed Lytwak  
Tod Maclay

William MacLeish & Elizabeth  
Libbey  
Audrey Magoun & Patrick  
Valkenburg  
Marilyn Mahoney  
Elizabeth A. Manes  
George R. & Marjorie J. Manglitz  
Marianist Novitiate Mount St. John  
David A. & Anne L. Marks  
James H. & Patricia Jo Marlett  
Robert B. Marshall & Nancy  
Lehenbauer  
Omar Postigo Martell  
Beverly L. Martin  
Helen & Edwin Martin  
Francis G. & Christine B. Martin  
David Martinez  
Bradley J. Masi  
O.R. & Lorna L. Maslenikov  
Peter & M. Kristine Mason  
Austin Mast & Sky Feller  
Thomas R. & Nina Mastick  
Heather M. McCargo  
Stephen F. McCarthy  
Kirk R. McClelland  
Mary McCormick  
Karen P. McCoy  
Christopher J. & Lynda A. McElroy  
Lucy McGee  
Alberta J. McGrath  
Dorothy F. McNeil  
Meadow Lark Dairy  
Jaye Melcher  
Margaret G. Mellon  
Conrad V. & Mary Lee Plumb-  
Mentjes  
Thomas E. Mertz  
JoAnn F. & Alex A. Meyer  
Ron Michael  
Howard Walter Mielke  
Mark & Jeanette Mikinski  
Gregory M. Mikkelsen  
Amy E. Miller  
Isabel Miller  
Jerry & Marilyn Milleson  
Gail & George Milton  
Dave & Florence Minar  
Craig & Susan Miner  
James D. & Sarah D. Minick  
Joseph G. & Judith Mintz-  
Hirschberg  
Julie E. (Betsy) Mitchell  
Bonny A. Moellenbrock & Michael  
I. Lowry  
Therese Moeller  
Robert T. Mohler  
Vonna Jo Moody  
Gregg T. & Emily B. Moore  
Thomas W. & Anne H.T. Moore  
Harry & Lois Morgan  
Mark A. Morgenstern & Sally A.  
Meyer  
Michael Morley  
R. Amadea Morningstar & Gordon  
Bruen  
John Morrill  
David Morrow  
Lynn W. Moser  
Barbara L. Mueller  
Alison G. & Martin L. Murie  
Glen A. Murray  
J. Kenneth Myers  
Dean Myerson  
Darrell E. and Luanne Napton  
David P. & Nancy A. Nedveck  
Alice C. Nelson  
Robert Nelson  
Katy Nestor  
New England Small Farm Inst.  
Richard D. & Shirley A. Newsome

Dolores E. Nice & David P. Siegenthaler  
 Barb Nichols  
 Paul F. & Elaine Nighswonger  
 William N. Nix  
 Paul Norland  
 Elizabeth C. Norton  
 Ken Norwood  
 Janet A. & John C. Nybakke  
 Laura M. O'Brien  
 David O'Shields  
 David & Jeanne K. Ode  
 Yvette R. Ogle  
 John & Barbara Gerlach Opie  
 Leni Ortenburger  
 Jeff Osborne  
 Brad Ostrander  
 James M. Ouray  
 Jim Owens  
 Earl W. & Jeanne R. Palm  
 Alan L. Parker, II & Rebecca Ann Zerger  
 Mary Thorpe Parker  
 Zia Landiss Parker  
 Gary & Eileen Parks  
 Larry Parnell  
 Steven D. Patterson  
 Lisa Paulson  
 Harold W. Payne  
 Jeni L. & Richard J. Pearce  
 Elmer N. & Wilma Pearce  
 Joel L. Pederson & Carol M. Dehler  
 Cynthia S. & Ronald M. Pederson  
 Leo Pedretti  
 C. Diane Percival  
 Dale Perkins  
 R. Abner & Kathyne Perney  
 J. Yannick Perrette  
 John E. & Merle L. Peterson  
 Virginia M. Sonne-Peterson  
 Katharine M. & Harry J. Petrequin Jr.  
 Annette E. M. Pfannenstiel  
 Donna Pickel  
 Carol Pilgian  
 Lawrence Robert & Jeanne Marie Pinneo  
 Dwight & Lavonne Platt  
 Bruce Plenk & Julie Cisz  
 Bryce J. & Kathleen Plunkett-Black  
 Ben Poage  
 Dr. William R. Pokross  
 Kenneth A. & Julia H. Porter  
 Donald F. Poscoe  
 Charles A. & Marie J. Praspal  
 Thomas & Sandra Pritchard  
 Michelle Pulich  
 Quincy University Friary  
 Radiance Dairy  
 Kathryn L. Hoffman-Rankin  
 John Ranney  
 Neal S. & Izen I. Ratzlaff  
 Thomas L. Rauch & Joyce Borgerding  
 Dr. P. Edmund & Kristina Razma  
 L. David & Ann Redmon  
 Patty & Jerry Reece  
 David & Wendy S. Reinhardt  
 Robert A. Renk  
 Mabel C. Richardson  
 Curtis C. Ridling  
 Ben Rinkevicz  
 Janet I. & Wayne L. Rippel  
 John A. Rogers  
 Lenton D. & Norma Jean Roller  
 Arlene V. Root  
 James A. Rousmaniere, Jr.  
 Andrew L. & Morissa R. Rubin

Martha J. Ruhe  
 Thomas Ruppert & Maria Carolina Gomez  
 Matt Russell  
 Michael & Regula Russelle  
 Patricia J. & Jerry D. Ryan  
 Steve & Lynne Ryan  
 Scott Sadil  
 Sandhill Farm, Inc.  
 Freda C. & Samuel Sass  
 Laura Sayre  
 Stefan Schlogl  
 Joel A. Schmidt  
 Carol C. Schmitt  
 Karen Schnabel  
 Nancy Roca & Phillip W. Schneider  
 Steffen A. & Rachel Schneider  
 Steve & Bridgit Schock  
 B. John & Linda S. Schole  
 Karl Schroeder  
 Jeffrey J. Schruben  
 Amy D. Schwartz  
 Elaine G. & S. Daniel Schwartz  
 Richard L. & Peggy Sechrist  
 Janet Yael Seligman  
 John C. Shaski & Sara E. Martin  
 Sandra J. Shaw  
 Jim & Sara Shelton  
 David G. Shier  
 Deborah L. & John D. Shortess  
 Ann B. Simpson  
 Diane Simpson  
 Steven R. Sirois  
 Donald E. & Elvera W. Skokan  
 Kay V. Slade  
 John A. & Beverly Sluss  
 Dennis & Peggy Smart  
 Beth Smith  
 Daniel G. & Cheryl L. Smith  
 Daryl D. & Sue A. Smith  
 F. Scott Smith  
 Soil Technologies Corp.  
 Thomas Patrick Soule & Janet Sharon Boe  
 Gary Spangler  
 Paul Spence  
 Donna J. Spohn

Eric A. & Mary Louise Stahl  
 Robert & Clara Steffen  
 Fr. Jerry Stein  
 Anudeva Stevens  
 Dean Stevens  
 Vernon M. & Jean M. Stevens  
 Flisa Stevenson  
 Wendell H. & Elizabeth J. Stickney  
 Steve Stodola  
 Russell & Dorothy Stone  
 Stonewall Farm  
 Bianca Storlazzi  
 Michael Strigel  
 Lawrence E. Stuart  
 John Carl & Virginia A. Stuhr  
 Michael J. & Susan J. Sudalnik  
 Persis B. Suddeth  
 Brian J. & Jonita L. Suderman  
 Janet L. Suelter  
 Anna Suter  
 Edward C. & Janice C. Swab  
 Gerald Swafford  
 Lynda G. Swander  
 David K. & Shelli A. Swanson  
 Jonathan Sweet  
 Walter P. & Jeanie M. Sy  
 Maggie Winter & Rusty Sydnor  
 Carol E. & Stephen I. Tatsumi  
 Bron Taylor & Beth Corey-Taylor  
 Victoria Tenbrink  
 Ruth Terrill  
 Paul G. & Janice J. Theobald  
 Stephanie Thompson  
 Daniel Howard Tolson  
 Sarah Chappell Trulove & James W. Woelfel  
 U S West Foundation  
 Rebecca S. Unternahrer  
 Daniel G. & Amber D. Vallotton  
 Susan Van Atta  
 Vantage Quest  
 Helen Ann P. Vinton  
 Phil & Helen Vogt  
 Elizabeth J. Vollbrecht  
 Dr. Orville L. & Helen M. Voth  
 Verlon K. & Elaine J. Vrana  
 John & Bette Sue Wachholz

John M. Wade  
 Virgil Wagner  
 David Wagoner & Arwen Donahue  
 William & Penny Wahler  
 James & Donna Wessel Walker  
 Richard S. Waxman  
 Rita L. & Martin C. Webb  
 Paul K. Weidhaas & Madonna M. Stallmann  
 Darrell G. & Lois I. Wells  
 Robert Claire Wemer  
 Orval L. & Mary C. Weyers  
 Philip Weyman  
 Dr. & Mrs. H. E. Wheeler  
 Robert E. & Mary Whelpley  
 Tom & Nita Whiteman  
 Todd Wildermuth  
 Dr. Julia Willebrand  
 Roslyn Willett  
 David L. Williams  
 Stanley Paul Williams  
 Todd M. & Lezle G. Williams  
 Sarah Jane Williamson  
 Phillip J. Wilmore  
 Leni A. Wilsman  
 Professor Norman Wirzba  
 Bill & Jayne Wisler  
 Van Wolbach  
 Keith V. & Kathleen Wold  
 Ronald J. & Joyce A. Wolf  
 Joel & Joan G. Woodhull  
 Work Family Estate Trust  
 Greg & Donna M. Young  
 James H. & Marjorie H. Young  
 Rebecca Young  
 Dr. William M. & Dorothy A. Zales  
 Elisabeth Zall  
 Ruth R. & Mark W. Zalonis  
 Marie Zazzi  
 Dawit M. Zeleke  
 Kirsten L. Zerger & Sanford N. Nathan  
 Randall L. Ziglar  
 Karl Zimmerer

**Yes! I want to be a perennial Friend of The Land**

**Here's my tax-deductible gift to support The Land Institute's programs in Natural Systems Agriculture, The Sunshine Farm, and Rural Community Studies.**

\_\_\_\_\_ \$25 \_\_\_\_\_ \$35 \_\_\_\_\_ \$50 \_\_\_\_\_ \$100 \_\_\_\_\_ \$500  
 Name \_\_\_\_\_  
 Address \_\_\_\_\_  
 City \_\_\_\_\_ State \_\_\_\_\_ Zip \_\_\_\_\_

**My company has a Matching Gift Program that will increase my gifts. The necessary forms are enclosed.**

My company \_\_\_\_\_  
 My spouse's company \_\_\_\_\_

**Payment Method**

\_\_\_\_\_ My check, made payable to The Land Institute, is enclosed.  
 \_\_\_\_\_ Charge my \_\_\_\_\_ Visa \_\_\_\_\_ MasterCard

Account Number \_\_\_\_\_  
 Expiration Date \_\_\_\_\_ / \_\_\_\_\_ Signature \_\_\_\_\_

LR64

**Invest in The Land Institute!**

**Our research is paving the way to a new agriculture—farming modeled on native prairies. Farmers using Natural Systems Agriculture will produce food with little fertilizer and pesticide, building soil instead of losing it. If you share this vision and would like to help, please consider becoming a Friend of The Land.**

**To become a Friend of the Land and receive The Land Report please send your gift today. Clip this coupon and return it with your payment to:**

**The Land Institute  
 2440 E. Water Well Road  
 Salina, KS 67401**



2440 E. Water Well Rd.  
Salina, KS 67401

---

Non-Profit Organization  
U.S. Postage Paid  
Permit #81  
Salina, KS 67401

---

**Address Service Requested**

If the date on your label is before 4-1-98, this is your last issue. Please renew your support.